

# CATALOG

---

## 2023.4.4



LA  MARE



DOWNLOAD CATALOG



## TABLE OF CONTENTS:

<b>1. LIGHTING</b>	<b>4</b>	<b>22.1 HEATING FURNACE</b>	<b>32</b>
1.1 INTERIOR LIGHTING	4	22.2 BOILERS	33
1.2 OUTDOOR LIGHTING	4	<b>23. DECORATIVE RADIATOR</b>	<b>34</b>
1.3 OUTDOOR LIGHTING ON TERRACES	5	<b>24. BATHROOM LADDER HEATER</b>	<b>35</b>
<b>2. INSIDE DOOR</b>	<b>5</b>	<b>25. GAS BOX AND GAS SWITCH</b>	<b>35</b>
<b>3. DULUX PAINT</b>	<b>6</b>	<b>ADDITIONAL EQUIPMENTS</b>	<b>37</b>
<b>4. EXTERNAL CLADDING</b>	<b>7</b>	<b>26. FLOATING PACKAGE</b>	<b>38</b>
4.1 VOX	7	26.1 NAVIGATION LIGHT AND ROPES	38
4.2 VINYLIT FACADE	7	26.2 SONARS	38
<b>5. FLOOR</b>	<b>8</b>	26.3 ENGINES	39
5.1 KRONOSPAN ROCKO	8	26.4 STEERING CONSOLE AND WHEEL	40
<b>6. SKIRTING BOARD</b>	<b>9</b>	26.5 ANCHOR, BEAMS AND FLOATS	41
<b>7. CEILING</b>	<b>9</b>	<b>27. MODIFIED WINDOWS AND DOORS</b>	<b>42</b>
<b>8. BATHROOM WALL COVERING</b>	<b>10</b>	<b>28. STAIRCASE</b>	<b>43</b>
<b>9. BATHROOM CABINET AND SINK</b>	<b>12</b>	28.1 SPIRAL	43
<b>10. SHOWER ENCLOSURE</b>	<b>13</b>	28.2 STRAIGHT	43
<b>11. TOILET</b>	<b>13</b>	28.3 LADDER	43
<b>12. IKEA KITCHEN</b>	<b>14</b>	28.4 FRONT STRAIGHT	43
12.1 KITCHEN FRONTS	14	28.5 BLACK LADDER	44
12.2 WORKTOP	16	<b>29. SIDE RAILINGS AND FLEXI TEAK</b>	<b>44</b>
12.2.1 KITCHEN WALL	17	<b>30. WATER-WASTE SYSTEMS</b>	<b>45</b>
12.3 SINK	18	<b>31. BEDROOM</b>	<b>46</b>
12.4 KITCHEN TAPS	20	31.1 WARDROBE AND BED	46
12.5 HANDLES	22	<b>32. TV, RADIO AND SOCKET</b>	<b>47</b>
<b>13. KITCHEN STOVE AND FRIDGE</b>	<b>24</b>	<b>33. SAUNA AND GRADUATION TOWER</b>	<b>48</b>
<b>14. MICROWAVE AND DISHWASHER</b>	<b>25</b>	<b>34. CURTAINS</b>	<b>48</b>
<b>15. OVEN</b>	<b>25</b>	<b>35. BLINDS</b>	<b>49</b>
<b>16. BAR</b>	<b>26</b>	<b>36. MODERN</b>	<b>50</b>
16.1 BAR TABLE	26	36.1 EXTERNAL COLORS	50
16.2 BAR LAMP	26	36.2 KITCHEN, BATHROOM TAPS AND SHOWERS	51
<b>17. OUTSIDE WINDOWS AND DOORS</b>	<b>27</b>	36.3 BATHROOM CABINETS	52
<b>18. RAILINGS</b>	<b>28</b>	36.4 FABRIC WALLS	53
MADE OF STAINLESS STEEL	28	<b>37. LAYOUTS</b>	<b>54</b>
<b>19. TERRACE BOARD AND CLEAT</b>	<b>29</b>		
<b>20. WATER PUMPS</b>	<b>30</b>		
<b>21. SWITCHES, SOCKETS, SOLAR SYSTEM</b>	<b>31</b>		
<b>22. HEATING AND BOILER</b>	<b>32</b>		



IS THE LEADING HOUSEBOAT BUILDER IN EUROPE

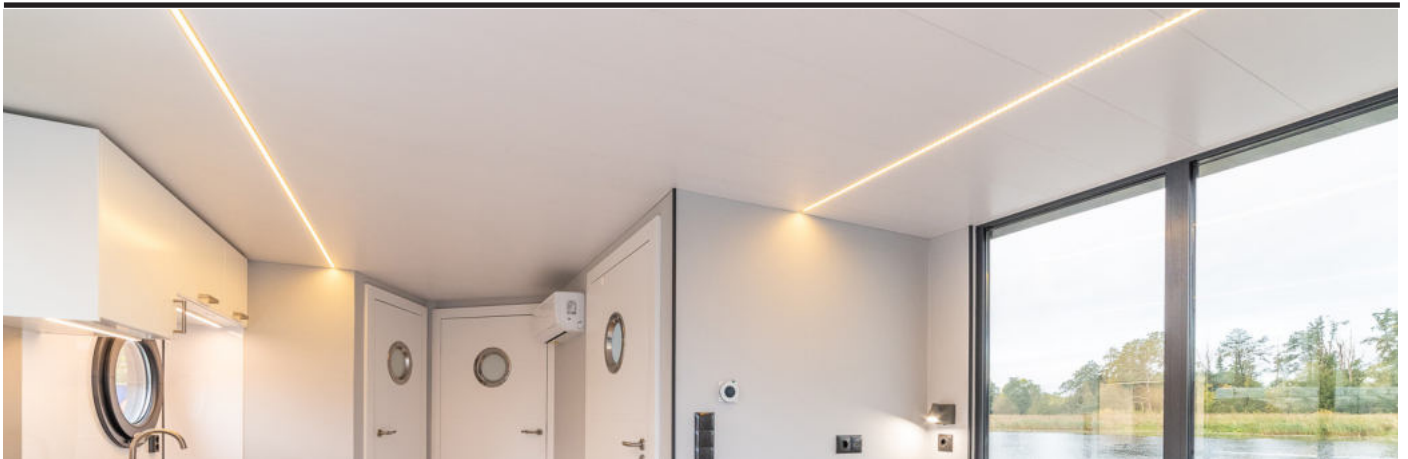
# LAMARE OPTION CHOICES



Developed by LaMare Sp. z o.o.  
Alexandr Kozyk  
Version 2023.4.4

# 1. LIGHTING

## *1.1 INTERIOR LIGHTING*



LED STRIPS

## *1.2 OUTDOOR LIGHTING*



APART LED STRIPS



MODERN LED STRIPS

## 1.3 OUTDOOR LIGHTING ON TERRACES



LED SPOTLIGHTS

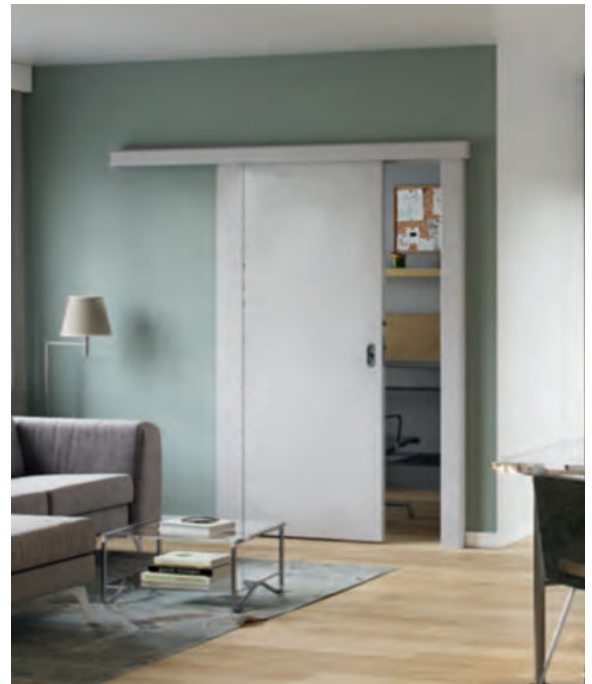
## 2. INSIDE DOOR



VECTOR Premium  
MODEL E



VECTOR Premium  
MODEL E with porthole



Sliding Door vector  
Options



Magix inox

We know that for every human being is the most important house, and each house begins with a door. They open and close intimate world in which we want to feel happy and safe.

Our passion is to create such a door that will be open with the desire and joy, to overstep the threshold in the most important place for you in the world - your home.

## 3. DULUX PAINT

---

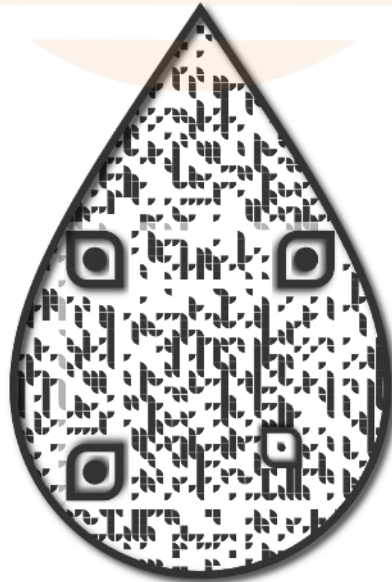
SCANDINAVIAN GREY

---

You can choose any colour from the Dulux pallet

---

### OPTIONS



The Dulux Visualizer App

---

An overview of paints that will help you deliver the perfect results for any project

# 4. EXTERNAL CLADDING

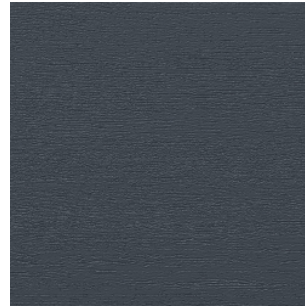
## 4.1 VOX



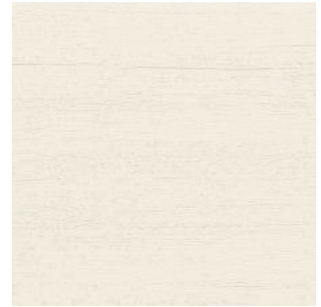
Modern Wood, White



Modern Wood, Claystone



Modern Wood, Anthracite



Modern Wood, Ivory



Modern Wood, Pearl Grey



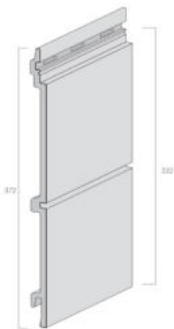
Modern Wood, Quartz Grey



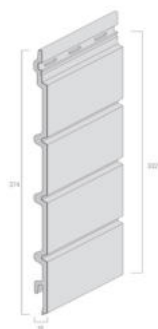
Concrete Oak FS-304, Wood Effect



Malt Oak FS-304, Wood Effect



Double board FS-302



Fourfold board FS-304

## VOX Cladding board types

## 4.2 VINYLIT FACADE

### OPTIONS



Sheffield Concrete Oak with Shadow vinylPlus

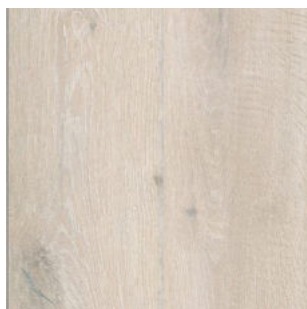


Turner Malt Oak with Shadow vinylPlus

# 5. FLOOR

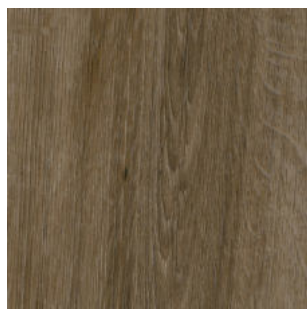
## 5.1 KRONOSPAN ROCKO

---



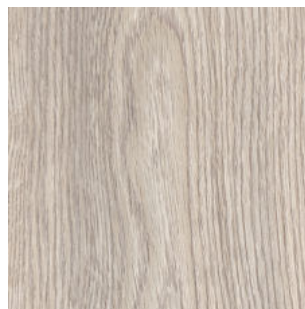
R071 CRYSTAL  
SHORE

---



R076 BOURBON  
CASK

---



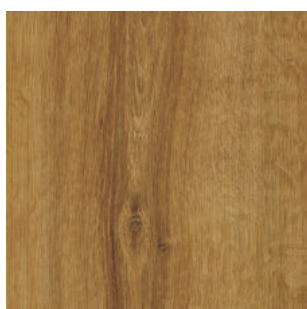
R077 BARISTA

---



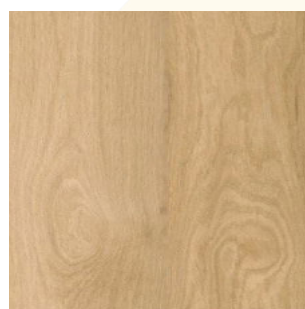
R090  
CASTLEBRIDGE

---



R081 CRESCENDO

---



R073 SCANDIPURE

---



The KRONOSPAN brand focuses its attention on the person, its needs and values, which is why we create our products and services, utilizing the knowledge from various humanistic disciplines. Thanks to the cooperation with psychologists, sociologists or anthropologists, we are able to design solutions, which support our customers in developing interiors, which provide freedom and enable fulfilling life passions.



## 6. SKIRTING BOARD **LA MARE**



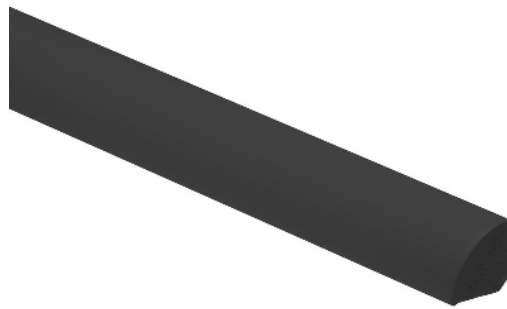
GRAY (103)

---



BROWN (OAK 104)

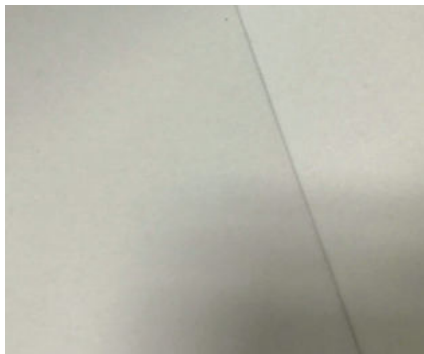
---



BLACK (102)

---

## 7. CEILING



WHITE MATT PANELS

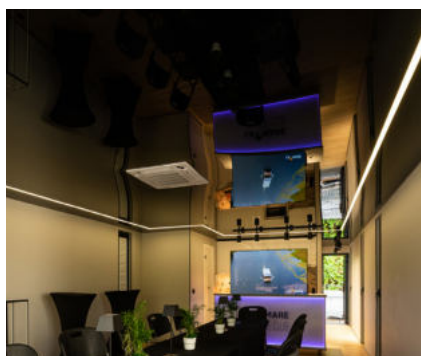
---

APART



WHITE STRETCH CEILING

---



BLACK STRETCH CEILING

---

MODERN

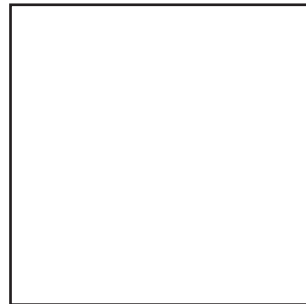
## 8. BATHROOM WALL COVERING



F8849 Natural Teak



F6308 Vogue Wood



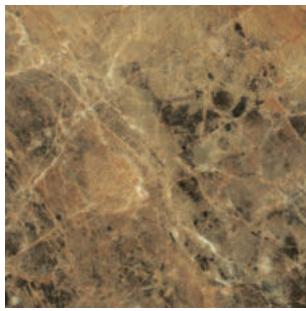
F0949 White



F3420 Dolce Vita



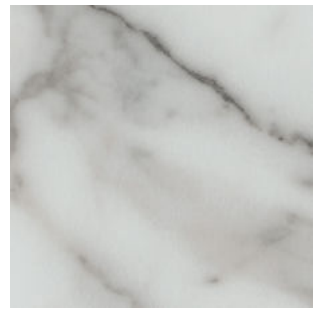
F3188 Almond  
Oak



F3457 Breccia  
Paradiso



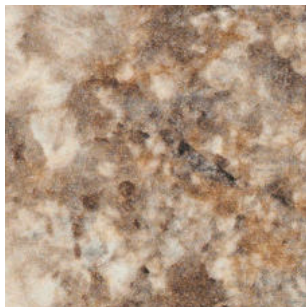
F3458 Travertine  
Silver



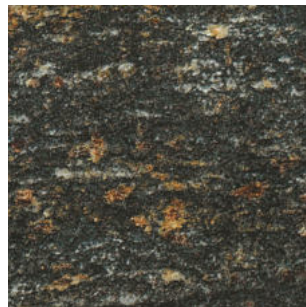
F3460 Calacatta  
Marble



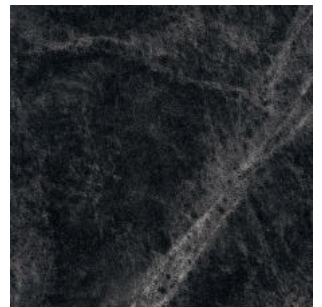
F3462 Slate  
Sequoia



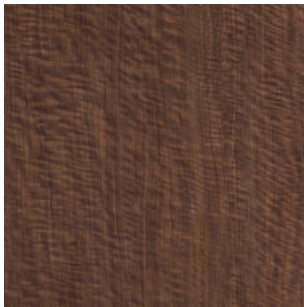
F3466 Antique  
Mascarello



F3467 Blue  
Storm



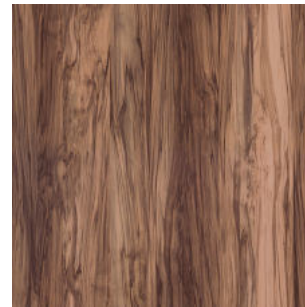
F3476 Jet  
Sequoia



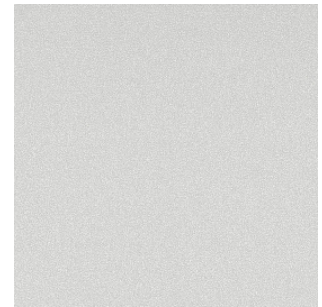
F3485 Black  
Walnut



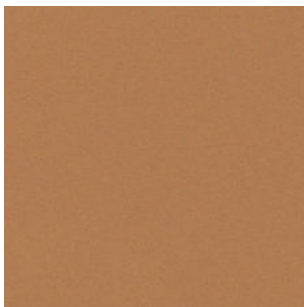
F5481 Oiled  
Olivewood



F6210 Couture  
Wood



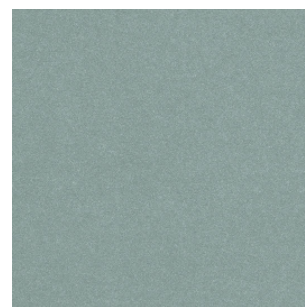
F6350 Frosted  
Dusk



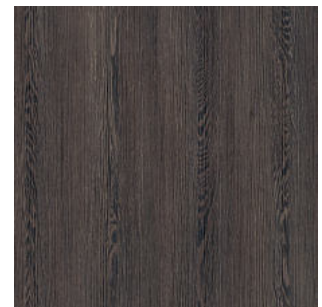
F6351 Frosted  
Copper



F6352 Frosted  
Gold



F6353 Frosted  
Jade



F8851 Classic  
Weng



PREMIUM GLOSS FINISH by FORMICA GROUP

AR+ is a High Gloss HPL with a superior scuff and mar resistance and therefore usable on vertical and horizontal surfaces. Formica's own laboratory tests show remarkable results. It has also been tested externally by LGA Institute with official certification of AR+ superior performance. Steel wool? Yes, one has to push really hard to get even the smallest scuff on AR+. It is also available in other designs and trendy colours.

AR+ not only performs better in scuff and mar resistance than any gloss HPL product in the market, but it also keeps the gloss level after heavy use. AR+ is a durable high gloss that will make the furniture look newer for longer.

# 9. BATHROOM CABINET AND SINK



SET MODUO SLIM  
40x22 GREY



SET MODUO SLIM  
40x22 WHITE



SET MODUO SLIM  
50x38 GREY



SET MODUO SLIM  
50x38 WHITE



SET MODUO  
SLIM 60x38 GREY



SET MODUO SLIM  
60x38 WHITE



SET MODUO SLIM  
80x38 GREY



SET MODUO SLIM  
80x38 WHITE

The range includes top-quality cabinets and cubicles in a variety of colours and sizes. The smart functionalities included optimise the storage space and convenience of organising your bathing utensils and beauty appliances. All bathroom furniture pieces are preserved with a quality coating system to improve the ease of cleaning.  
Create a beautiful and convenient bath space.

# 10. SHOWER ENCLOSURE



Sliding Door Shower enclosure  
DTr/BASIC



Square or rectangular corner shower enclosure  
KN/TX5b

---

STANDART SIZE 80X80, 70X90, 80X100, 70X100

# 11. TOILET



TOILET 24V/230V  
STANDARD



WALL HUNG TOILET  
UPGRADE OPTIONS



CINDERELLA STANDARD  
UPGRADE OPTIONS



CINDERELLA COMFORT  
UPGRADE OPTIONS

# 12. IKEA KITCHEN

## 12.1 KITCHEN FRONTS



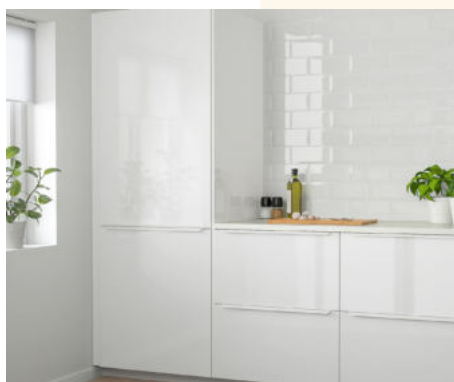
VOXTORP WHITE  
WITHOUT HANDLES

003.975.00



VOXTORP GREY WITH  
OUT HANDLES

704.540.97



RINGHULT LIGHT WHITE

702.051.02



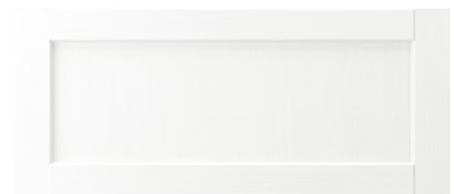
ASKERSUND JESION

203.318.72



BODARP

904.355.45



ENKÖPING

905.057.84

With the ikea system you have endless of possibilities when designing your kitchen. Whether you have a taste for the traditional, love the minimalism in modern style or land somewhere in between, you'll surely find something that fits you.

**LA MARE**  
*12.2 WORKTOP*

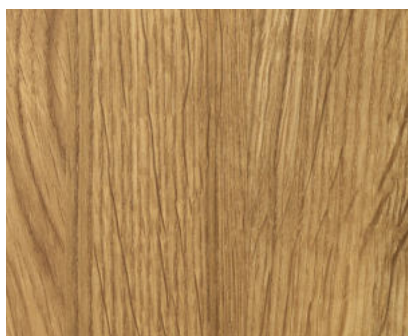
---



---

EKBACKEN BLACK STONE

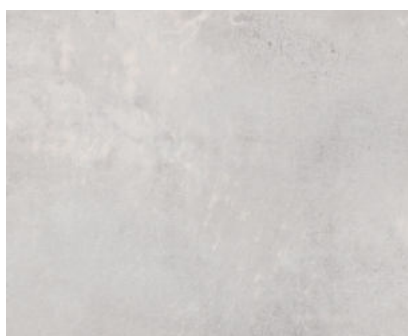
902.743.64



---

KARLBY OAK

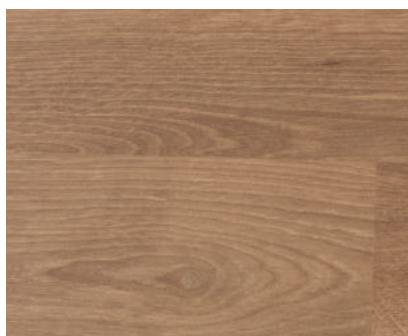
703.351.89



---

EKBACKEN LIGHT GREY

503.954.43



---

SÄLJAN OAK

604.391.73

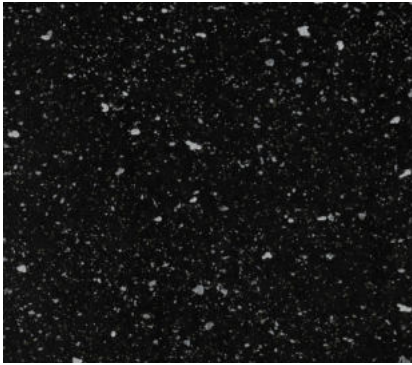


---

EKBACKEN BETON

603.356.51





SÄLJAN BLACK MINERAL

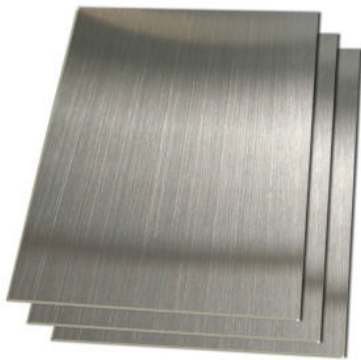
702.022.12

## 12.2.1 KITCHEN WALL

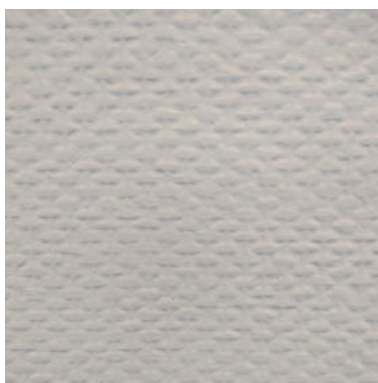
---



WHITE WALL PLATE



STAINLESS STEEL PLATE



WALLPAPER WITH  
COLOR: SCANDINAVIAN  
GREY

Our ready-made and custom-made kitchen worktops are tested against everyday kitchen challenges like liquids, oil, food and scratches – so you know they will last.

# 12.3 SINK

---



---

BOHOLMEN 47X30

991.575.01



---

FYNDIG 46X40

591.580.03



---

LANGUDDEN 46x46

591.573.91

# UPGRADE OPTIONS



CHICHI-LAVEO



ZORBA: ZQZ 2513



ZORBA: ZQZ G11A

Find sinks and taps to add the finishing touches to your kitchen here. Our kitchen sinks and taps are all as good-looking as they are functional, with plenty of different styles to match the look of your kitchen.

Whichever tap you choose, you'll save water with every use, thanks to an integrated aerator that mixes in air and reduces your water and energy consumption significantly.

## 12.4 KITCHEN TAPS

---



ALPINE: BGA 063M

---



ÄLMAREN  
004.551.61

---

## UPGRADE OPTIONS

---



ASTER: BCA B730

---



NEMEZJA: BEN 262M

---



SILIA: BQS B730

---



# 12.5 HANDLES



BAGGANÄS BLACK

803.384.13



BAGGANÄS SILVER

703.384.18



BAGGANÄS GOLD

003.384.07



HACKÅS

303.424.79



ORRNÄS SILVER

905.344.75



ÖSTERNÄS

403.488.95



ÖSTERNÄS

203.488.96

Knobs and handles are an important finishing touch to your home. Drawer knobs make your cabinets easy to open, while door handles can really tie your room together. We've got a wide range of colours, shapes and sizes to choose from. Most of our designs come in both a knob and handle version, too!

# 13. KITCHEN STOVE AND FRIDGE



INDUCTION  
VÄLBILDAD

204.675.92



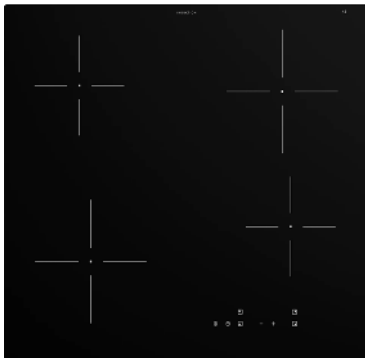
NAVY LOAD HOB, 2  
BURNERS

GAS



SMALL FRIDGE

## UPGRADE OPTIONS



INDUCTION GRUNDAD

404.670.82



NAVY LOAD HOB, 3  
BURNERS

GAS



DYNACOOK X2

GAS, NO FLAME



BIG FRIDGE

Gas hob, glass ceramic or energy-saving induction? How many burners would you like?

Our range of hobs has something that will match your space and your style of cooking.

Check out our range for a choice that will make your time in the kitchen easier and more fun, every day.

Don't forget to add a kitchen extractor fan, to keep cooking fumes out of the rest of your home.



# 14. MICROWAVE AND DISHWASHER



MATTRADITION  
304.117.69



MICROWAVE WITH  
OVEN  
SAMSUNG



DISHWASHER

# 15. OVEN



MATTRADITION BLACK  
804.117.24



MATTRADITION WHITE  
304.117.26



SMAKSAK BLACK  
904.117.28



SMAKSAK CHROME  
304.116.89

Our range of ovens and built-in ovens are designed to suit a variety of cooking styles by offering a wide range of functions and integrated accessories. That means, whether you're a frozen pizza lover, feeding a family, or working your way through cookbooks, you'll find an oven that's right for you. See our range of appliances.

# 16. BAR

## *16.1 BAR TABLE*

---



## *16.2 BAR LAMP*

---



SOLIN GOLD BLACK LAMP



MARKSLÖJD LAMP



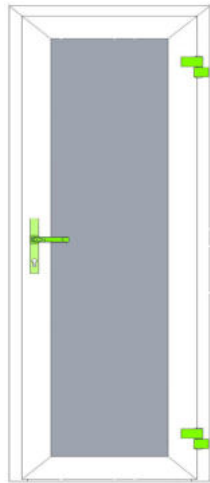
BLACK LAMP x3



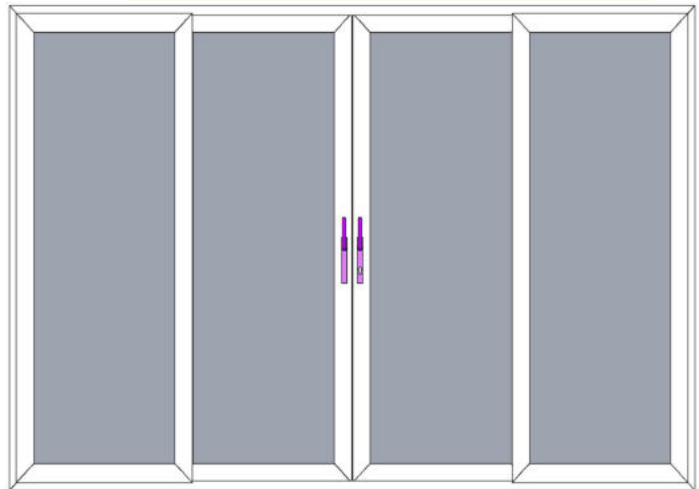
WHITE LAMP x3

With the flick of a switch, you can change a room's atmosphere with a lamp or light fixture. Want a cozy, calm vibe for movie night? Some pep to start your day? Indoor lighting can set the mood, add style and of course, brighten things up.

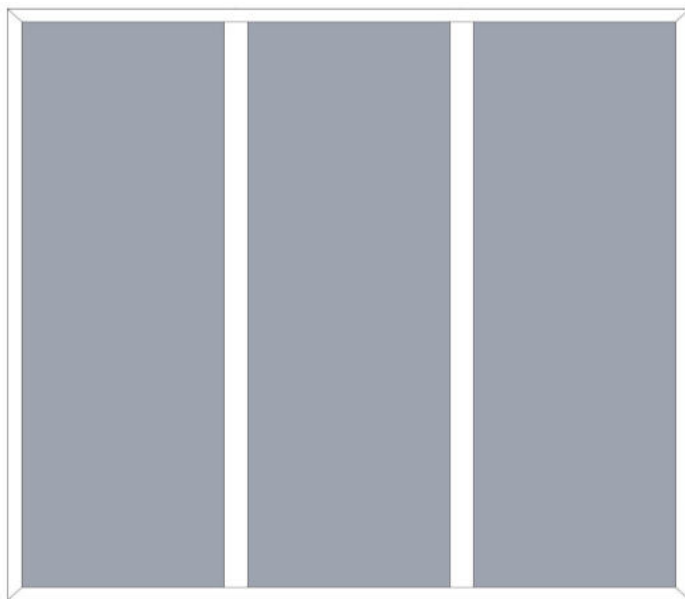
# 17. OUTSIDE WINDOWS AND DOORS



BACK DOOR



FRONT DOOR



SIDE WINDOWS

FROM APART L TO XXL  
2 GLASS FOR XS, S, M



ANTHRACITE

## OPTIONS



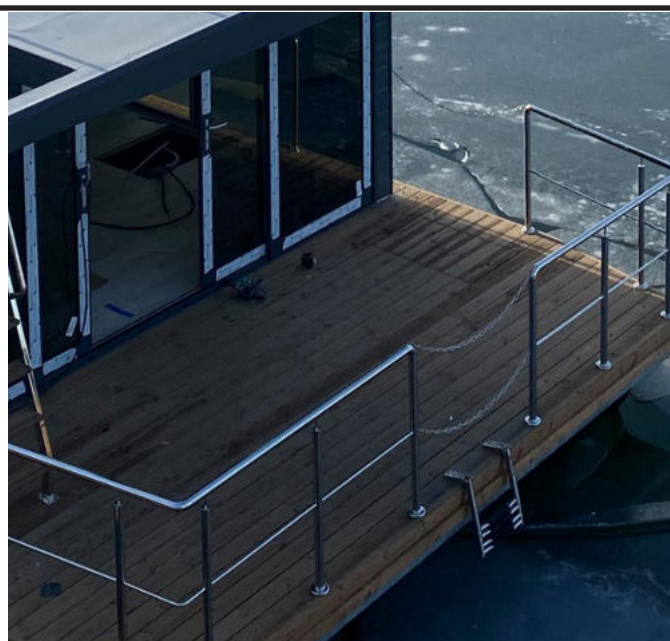
BLACK



WHITE

# 18. RAILINGS MADE OF STAINLESS STEEL

STEEL 304 or STEEL 316(non standard)



FRONT AND BACK / ROUND RAILINGS



FRONT AND BACK / BLACK SQUARE RAILINGS

# 19. TERRACE BOARD AND CLEAT

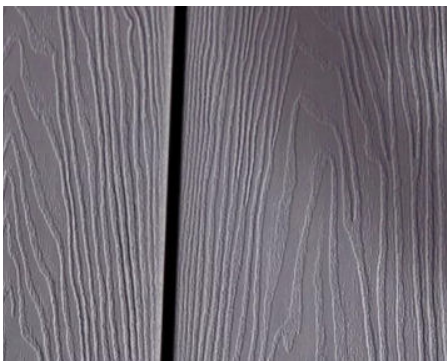


THERMORY THERMO



CLEAT

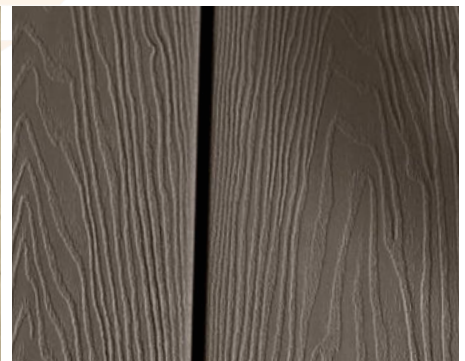
## UPGRADE OPTIONS



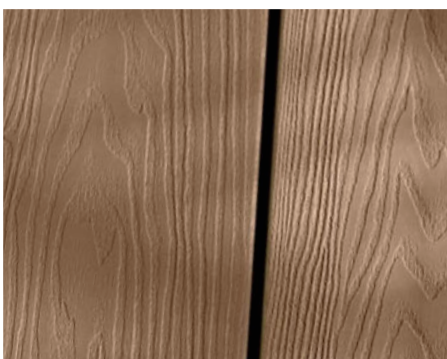
WEATHERED PEBBLE GREY



WEATHERED CEDAR



FLIP IPE



FLIP MAHOGANY

## 20. WATER PUMPS



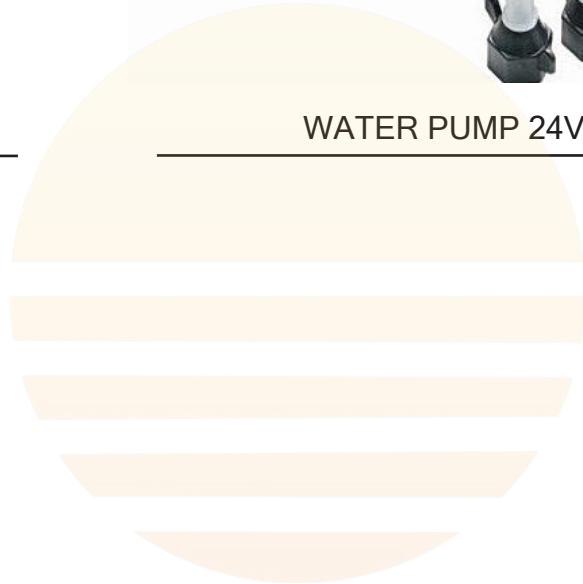
WATER PUMP 230V

---



WATER PUMP 24V

---



# 21. SWITCHES, SOCKETS, SOLAR SYSTEM



BACK SOCKET  
CONNECTION

FRONT SOCKET  
CONNECTION



ANTHRACITE

WHITE



NAVIAGATION  
LAMP 360

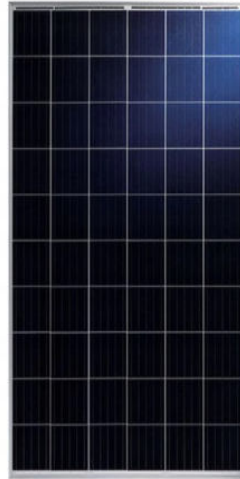


CABLE 15M

We have an excellent relationship with all of our suppliers, giving us unrivalled access to the products you need, including a large range of distribution, automation, control and switchgear products.



INVERTER 2.4 KW / 5 KW



SOLAR PANEL 310W



VETUS 220AH



INVERTER VICTRON  
UPGRADE OPTION



VICTRON ENERGY 220 AH

## 22. HEATING AND BOILER

### 22.1 HEATING FURNACE



GAS HEATER - TERMET ECOLINE SLIM



AIR CONDITIONER





WIFI CONTROL



WHITE REGULAR RADIATOR

40/60/80/100/120



RADIATOR 30/50

## OPTIONS



UNDERFLOOR HEATING OPTION -  
HEATING MAT



HYBRID 550W IVORY

## 22.2 BOILERS



WATER HEATER, ARISTON 50L  
BOILER



WATER HEATER, ARISTON 50L  
BOILER, WI-FI (OPTIONS)

# 23. DECORATIVE RADIATOR



ANTHRACITE



BLACK

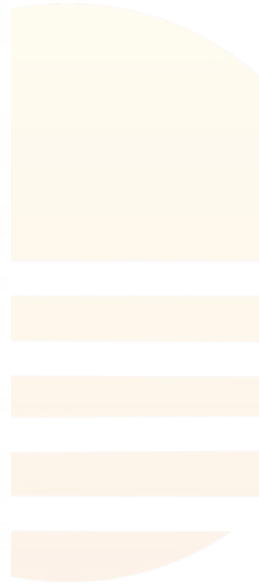


WHITE

## 24. BATHROOM LADDER HEATER



ELECTRIC



REGULAR

WIDTH 30 OR 50 CM

We want our houseboats to be comfortable, for some people that means control over the settings and temperature, for others uncompromising energy efficiency is most important, and many are looking for quiet performance at a price you can afford. Our goal is to give you that ideal indoor comfort, no matter where you live or what the weather.

## 25. GAS BOX AND GAS SWITCH



GAS SWITCH



GAS BOX





IS THE LEADING BOATBUILDER IN EUROPE

# ADDITIONAL EQUIPMENTS

# 26. FLOATING PACKAGE

## 26.1 NAVIGATION LIGHT AND ROPES



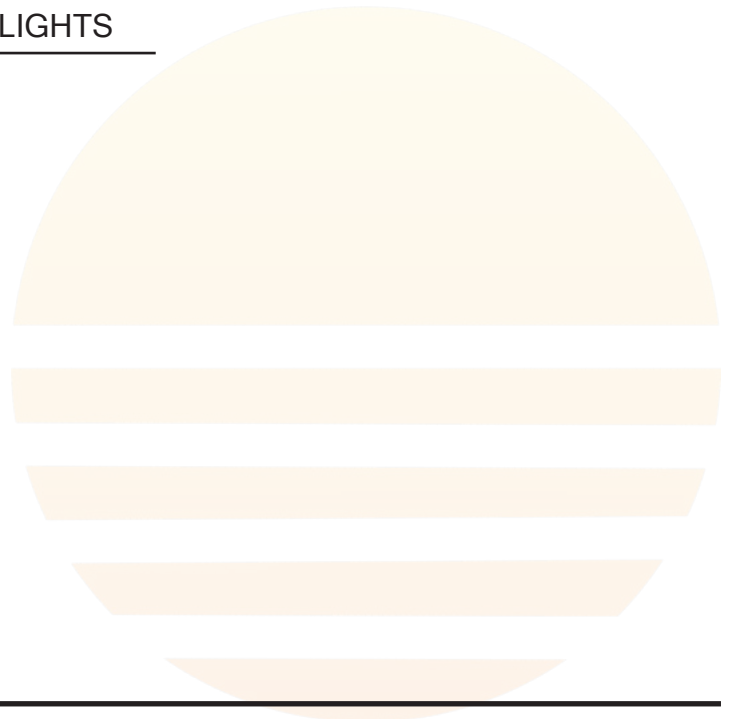
360 AND SIDE LIGHTS



BSH 360 & LIGHTS



ROPES



## 26.2 SONARS



SONAR ELEMENT 7,  
GPS, HV-100



SONAR I40 DEPTH



YAMAHA 9.9 HP



HONDA 20 HP



MERCURY 15 HP



YAMAHA 25 HP



E-TECH



THRUSTER



FUEL FILTER  
SEPARATOR



FUEL TANK 100 OR 70 L.

Marine engines: a key technology in continuous innovation  
Since the first steamship was invented, sea engines provide motion, reliability and safety to both people and goods. It is an extremely important technological system for the boating world, which over the years has been working to significantly extend the quality of its equipment, in terms of performance and life span.

## 26.4 STEERING CONSOLE AND WHEEL

---



BLACK



WHITE

### STEERING CONSOLE EXAMPLE



CHOICE WHITE/GRAY



CONSOLE COVER

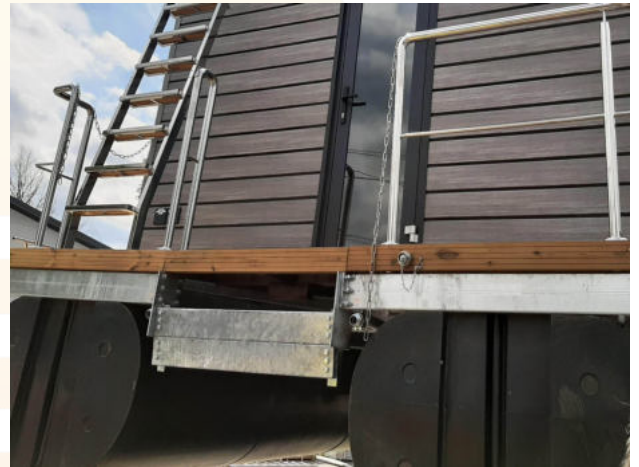
Steering console for houseboats with a lot of adjustment features. The easy use of the steering console adds to boating pleasure.



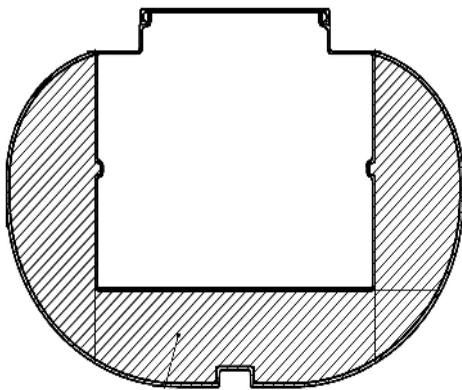
# 26.5 ANCHOR, BEAMS AND FLOATS



EXTRA FRAME AROUND ENGINE



ENGINE CONSTRUCTION WITH OPEN TERRACE



BOX IN FLOAT 470L



TRIMARAN



ANCHOR AND CHAIN

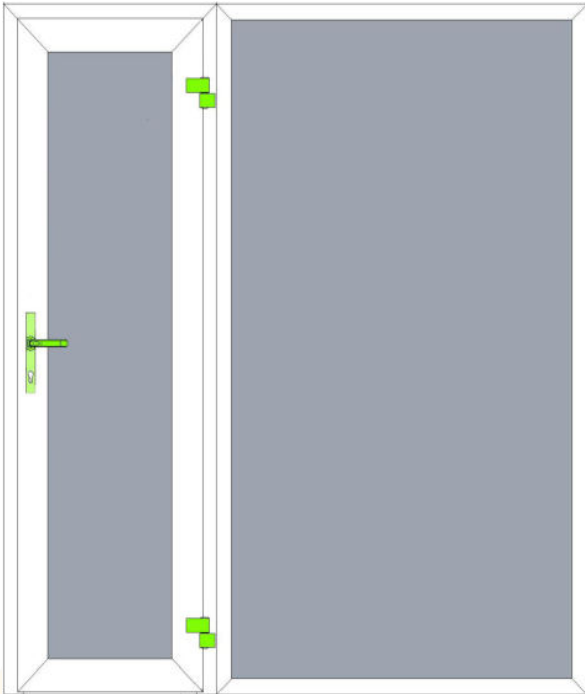


ELECTRIC

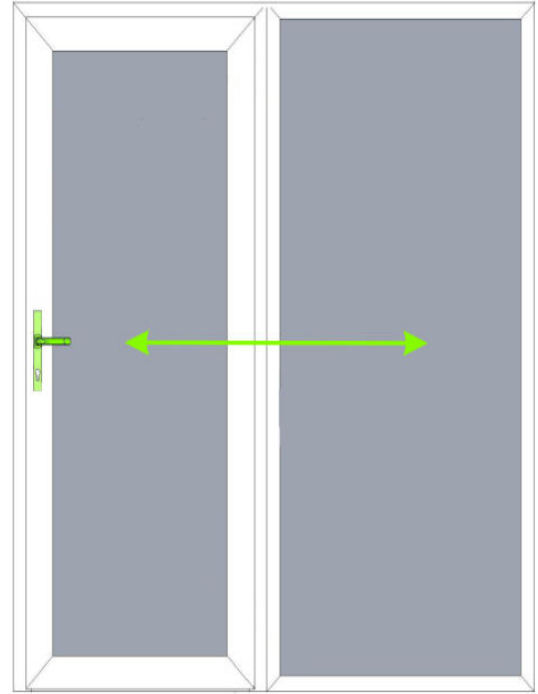


MANUAL

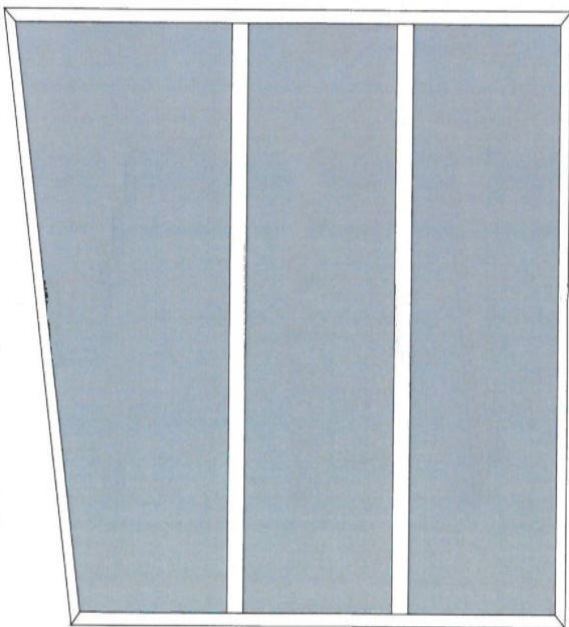
# 27. MODIFIED WINDOWS AND DOORS



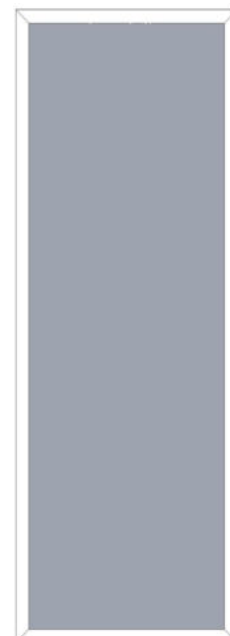
BACK DOOR



BACK SLIDE DOOR



SIDE WINDOWS



SINGLE SIDE WINDOW

We offers vast range of windows & doors designs for the houseboats that are sure to add grace to your space.

We have an exotic range of high-quality aluminium home windows & doors that have been designed to enhance the aesthetics and to protect your home from the chaos of the world outside.

# 28. STAIRCASE

## 28.1 SPIRAL



S1

FROM APART L TO XXL

## 28.2 STRAIGHT



S2

FROM APART L TO XXL

## 28.3 LADDER



S3

FOR APART XS, S, M

## 28.4 FRONT STRAIGHT



S4

FROM APART L TO XXL

## 28.5 BLACK LADDER



S5

MODERN

## 29. SIDE RAILINGS AND FLEXI TEAK



SIDE RAILINGS



TEAK DECKING EVA GREY OR BROWN  
«FLEXITEAK»

# 30. WATER-WASTE SYSTEMS



24V FAECES PUMP



WASTE PUMP CONNECTION



CLEAN WATER FROM TANK



CLEANING WATER SYSTEM FROM SALT WATER



LAMARE SEWAGE TREATMENT PLANT



ETHERON 50 SEWAGE TREATMENT PLANT

# 31. BEDROOM

## *31.1 WARDROBE AND BED*

---



PAX 50cm/60cm/37cm X 201cm



BED 130/140/160 X 200cm

---

Bedroom furniture sets give you a shortcut to a complete, coordinated bedroom. They have all the essentials: a bed and storage for your clothing.

# 32. TV, RADIO AND SOCKET



RADIO PIONEER



RADIO TONSIL



SPEAKERS



RADIO FUSION



CAMERA



ANTENNA GLOMEX



Smart TV's 24" 32"  
40"



TV-RADIO SOCKET



BEDLAMP



PRIORITY  
RELAY



CONNECTION  
380V SOCKET AND  
CABLE PLUG

## 33. SAUNA AND GRADUATION TOWER



HOME GRADUATION TOWER



ELECTRIC SAUNA FOR 2 PERSONS



Order the perfect wellness and relaxation space.

We have everything you need to create your own DIY sauna. All of this adds up to endless combinations to make sure that your sauna is uniquely designed for you.

## 34. CURTAINS



GREY



GRAY BLACKOUT



# 35. BLINDS



# 36. MODERN STANDARD

## 36.1 EXTERNAL COLORS



ANTHRACITE | RAL 7016

BLACK | RAL 9005

BROWN | RAL 8019

WHITE | RAL 7024

ULTRAMAT C4



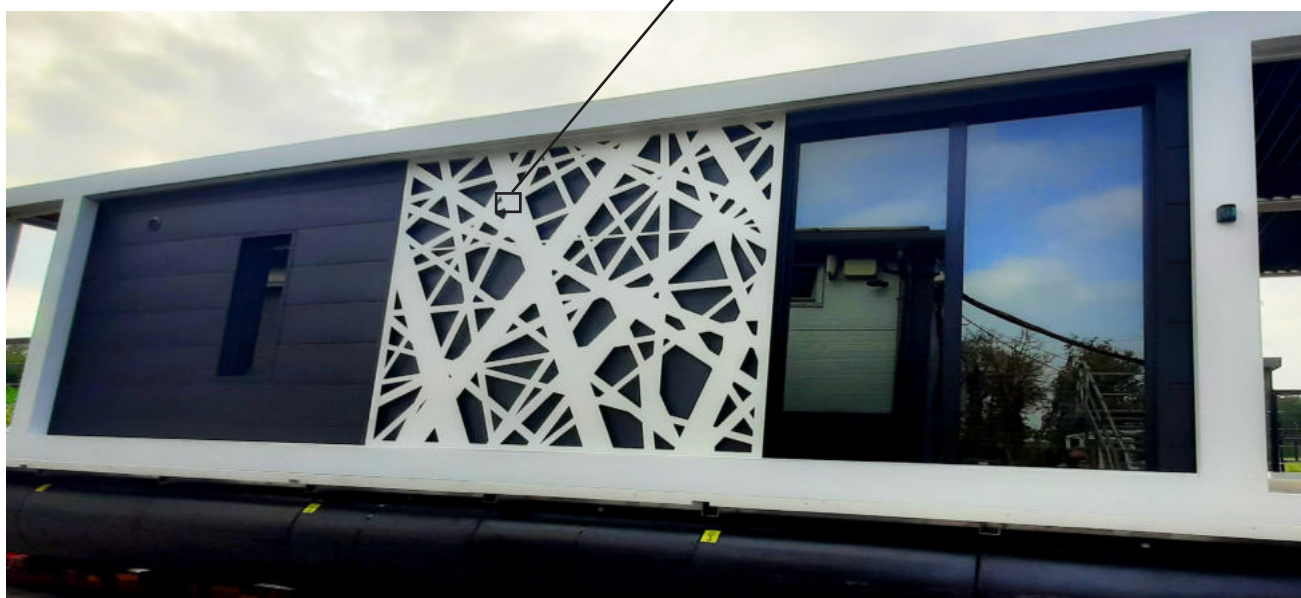
PLANT OR PATTERN

ANTHRACITE | RAL 7016 MAT

BLACK | RAL 9005 MAT

GREY | RAL 7024 MAT

WHITE | RAL 9010 MAT



# 36.2 KITCHEN, BATHROOM TAPS AND SHOWERS



KITCHEN -  
LUGANO SLIM  
BLACK



BATHROOM -  
REA BLACK

## BLACK SET



SHOWER ENCLOSURE BLACK



SHOWER  
COLUMN BLACK



KITCHEN -  
LUGANO SLIM  
GOLD



BATHROOM -  
REA GOLD

## GOLD SET



SHOWER ENCLOSURE GOLD



SHOWER  
COLUMN GOLD

## 36.3 BATHROOM CABINETS

---



BLACK CABINET

---

## 36.4 FABRIC WALLS

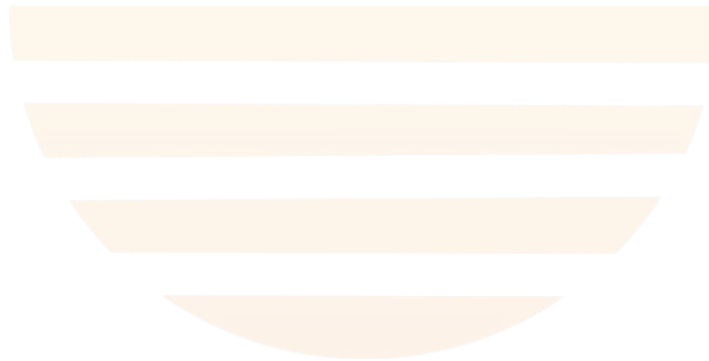
---



LIVING, SLEEPING ROOM  
WALL v1



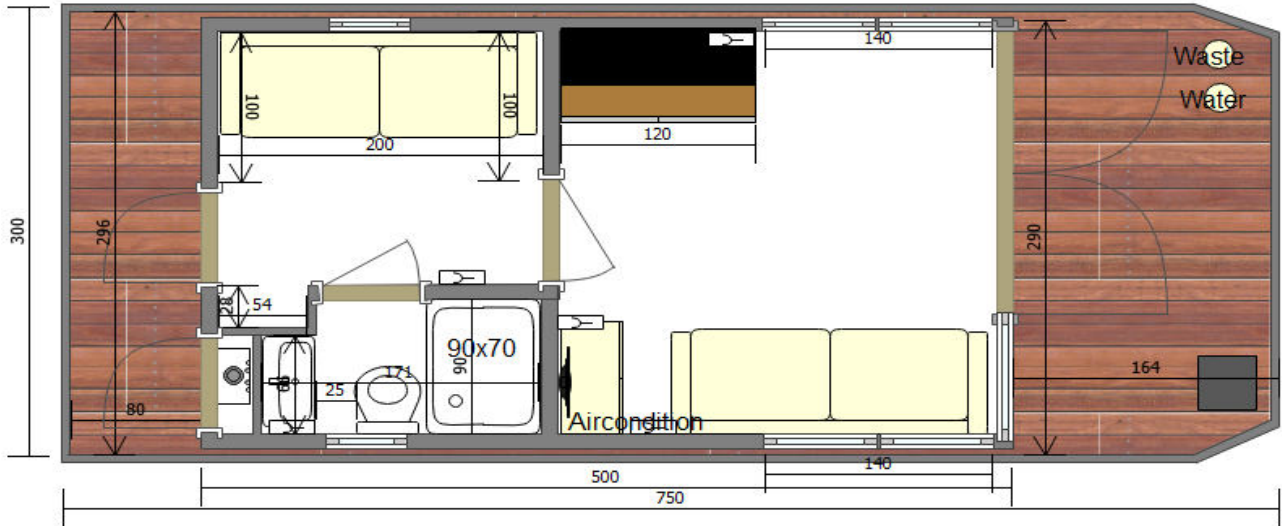
LIVING, SLEEPING ROOM  
WALL v2



# 37. LAYOUTS

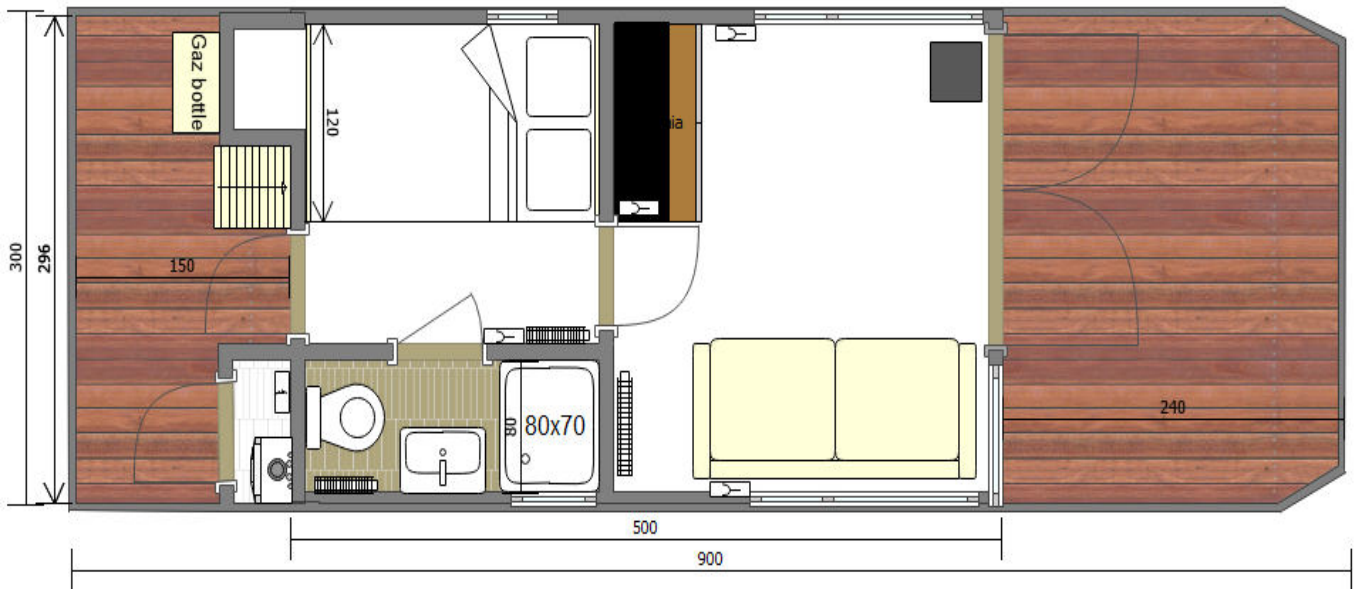
## APART XS

APART XS 1.1

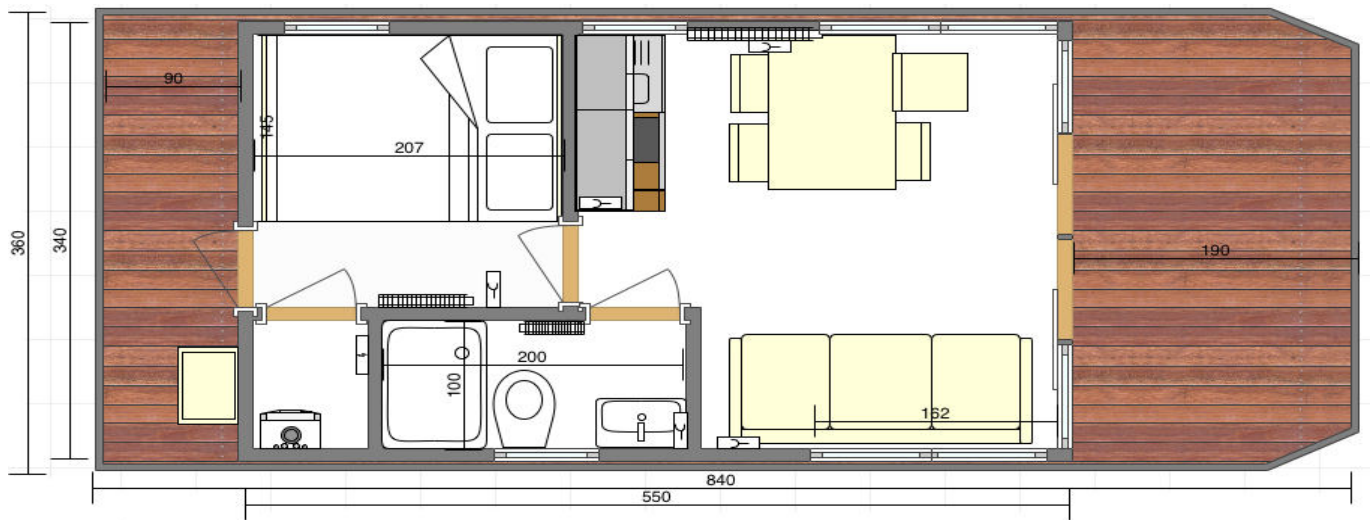


## APART S

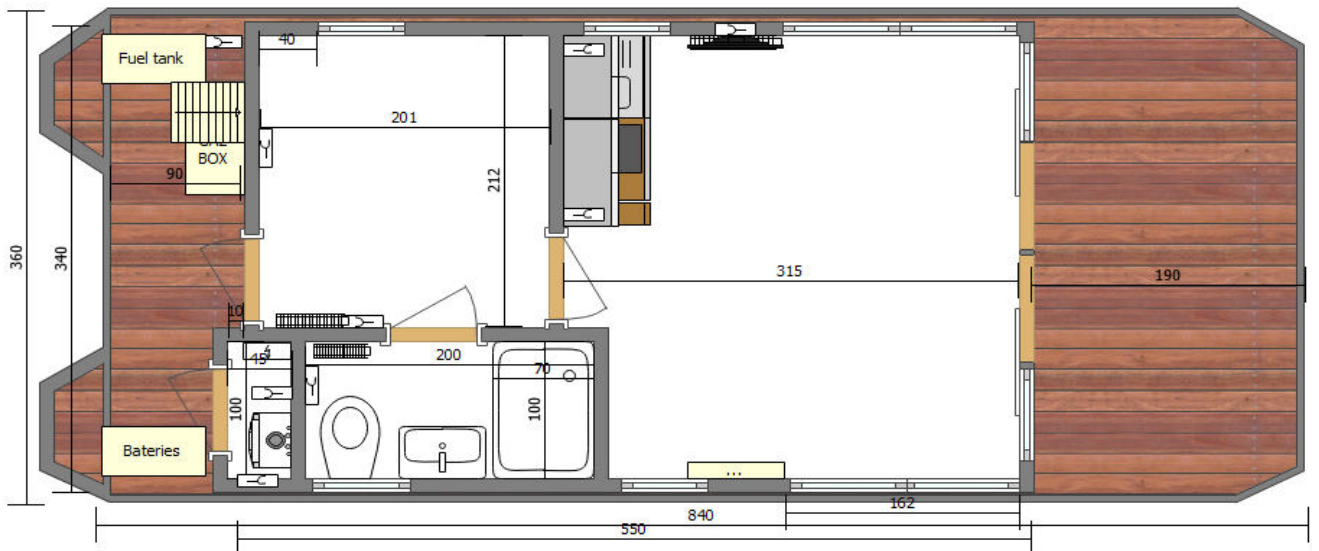
APART S 1.1



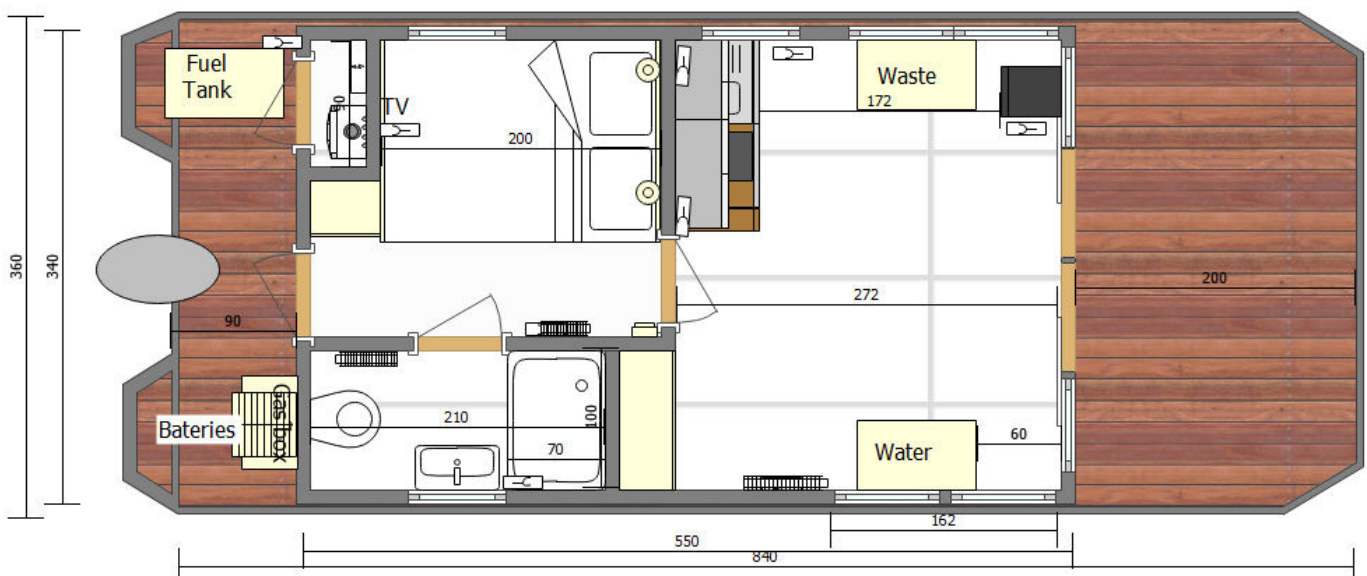
APART M 1.1



APART M 1.2

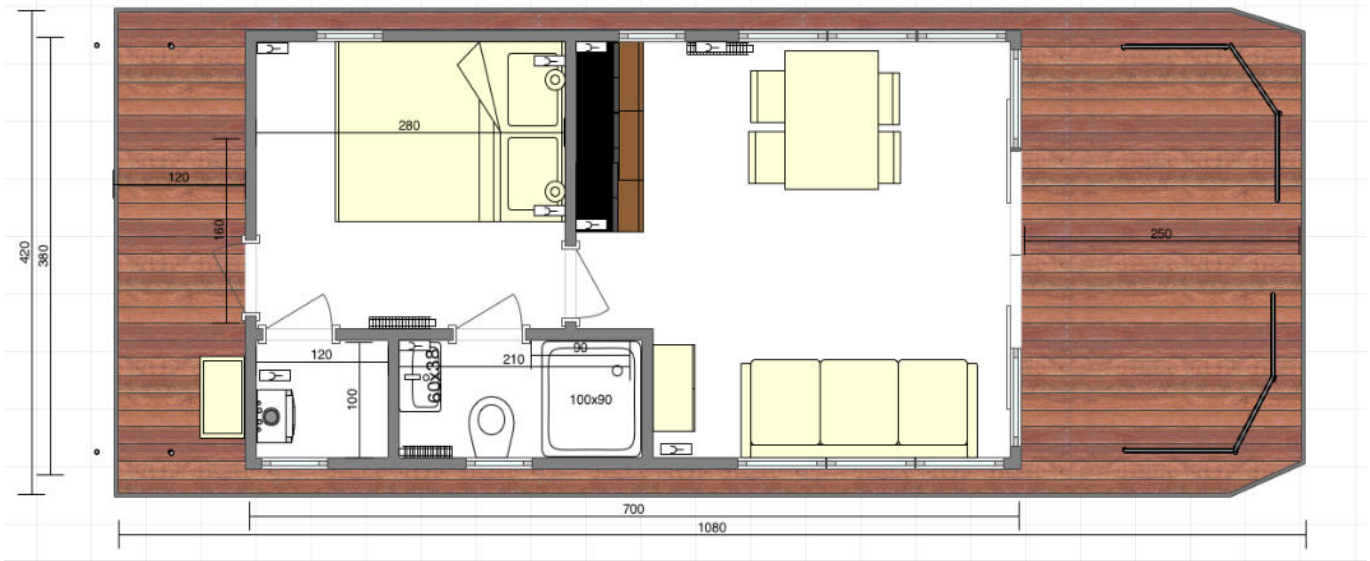


APART M 1.3

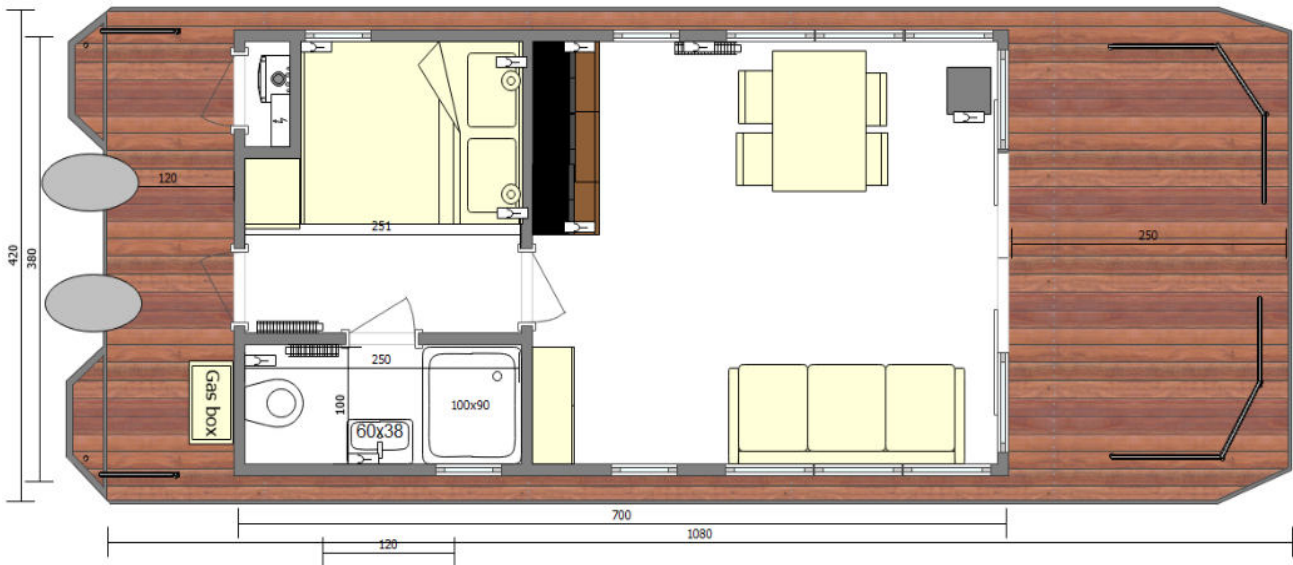


# APART L

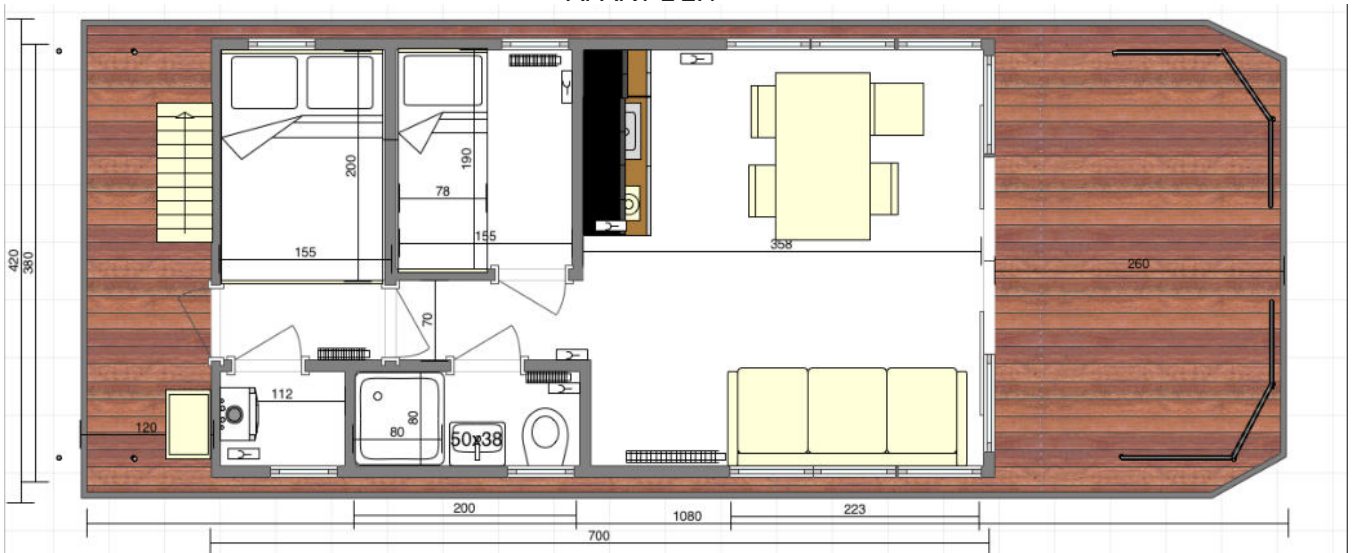
## APART L 1.1



APART L 1.2

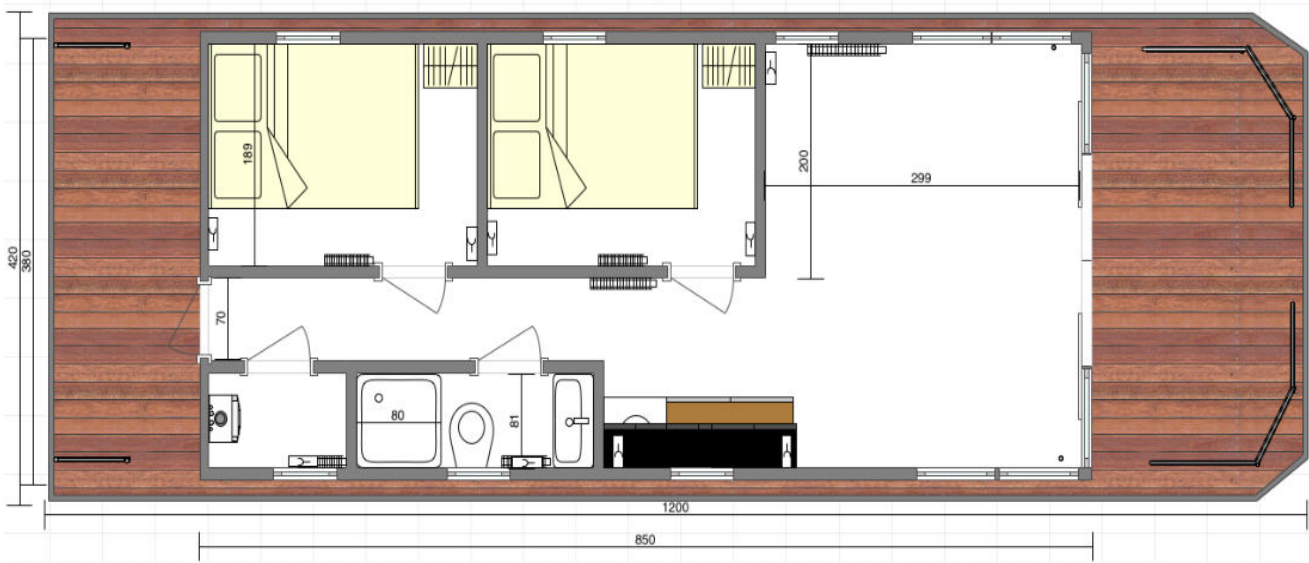


APART L 2.1

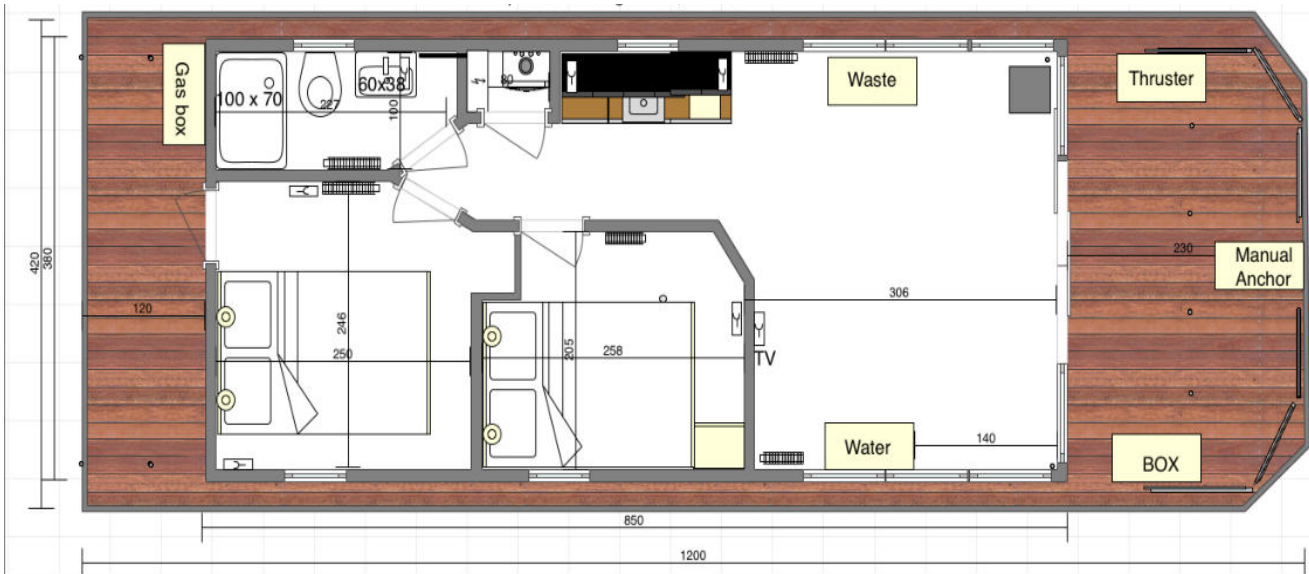




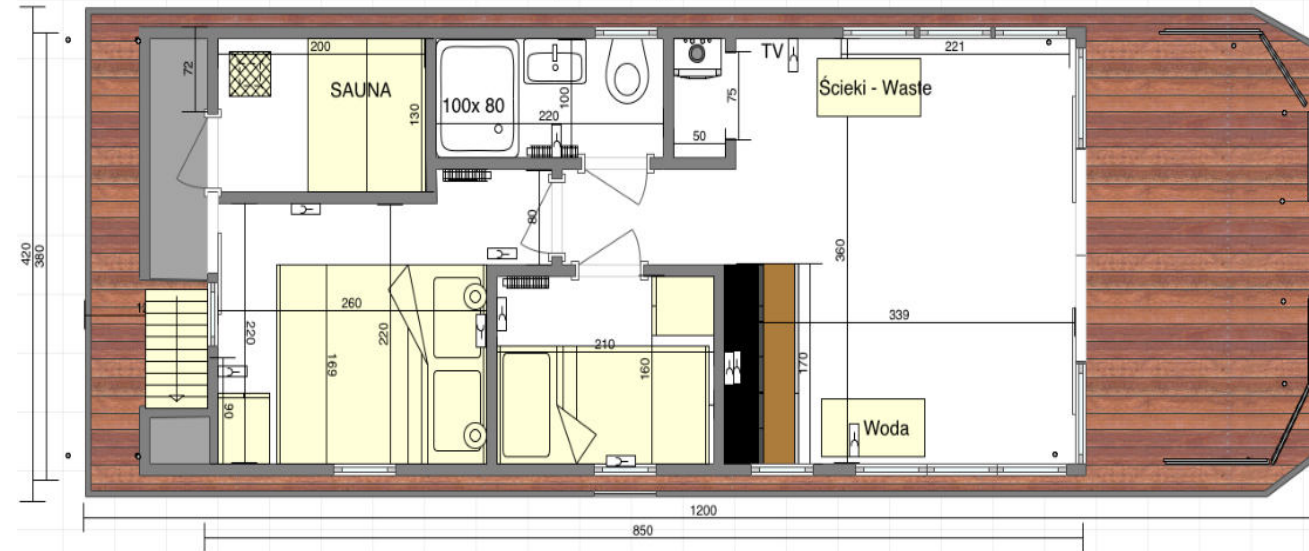
APART L LONG 2.2



APART L LONG 2.4

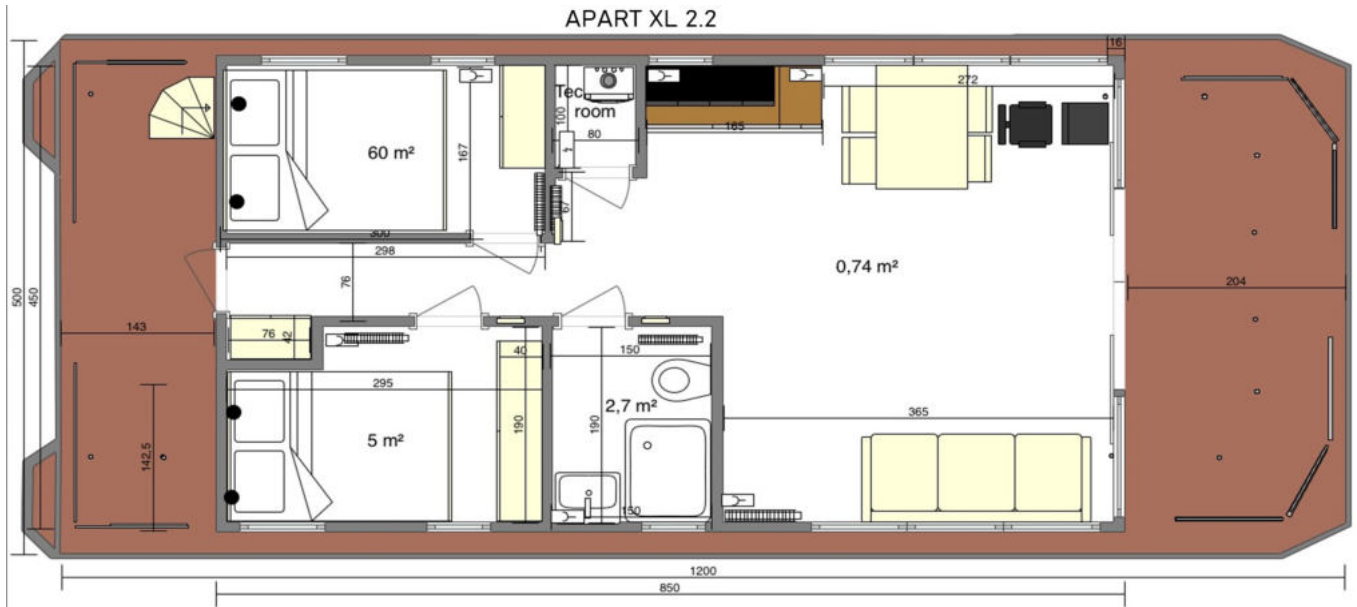


APART L LONG 2.2.1



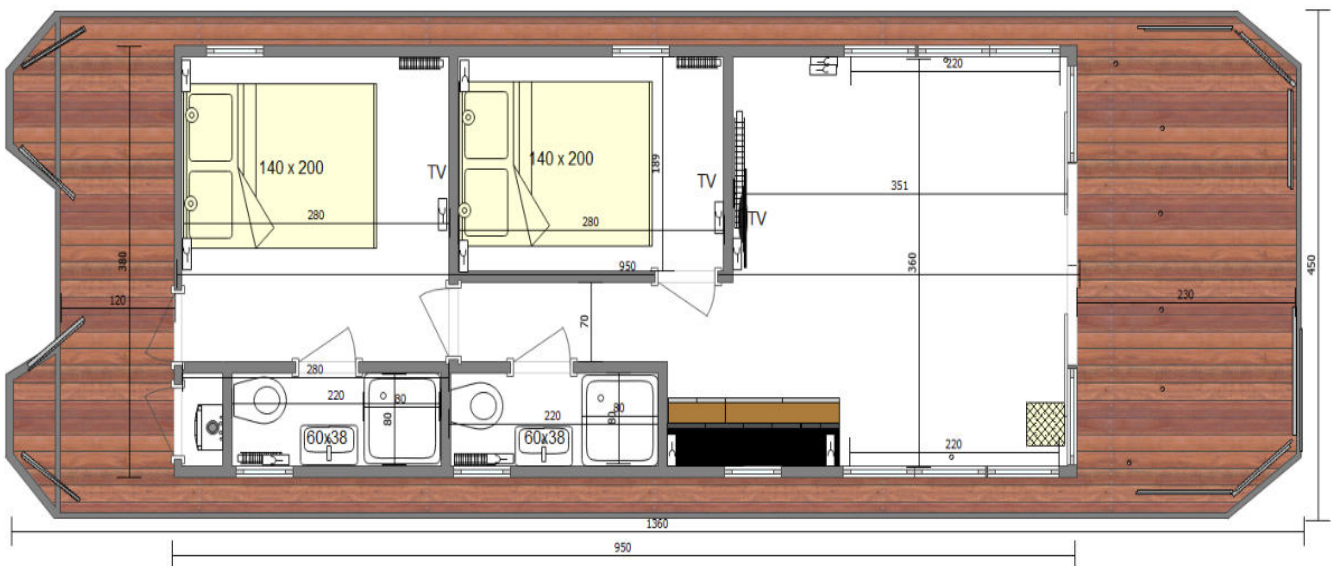


APART XL 2.2

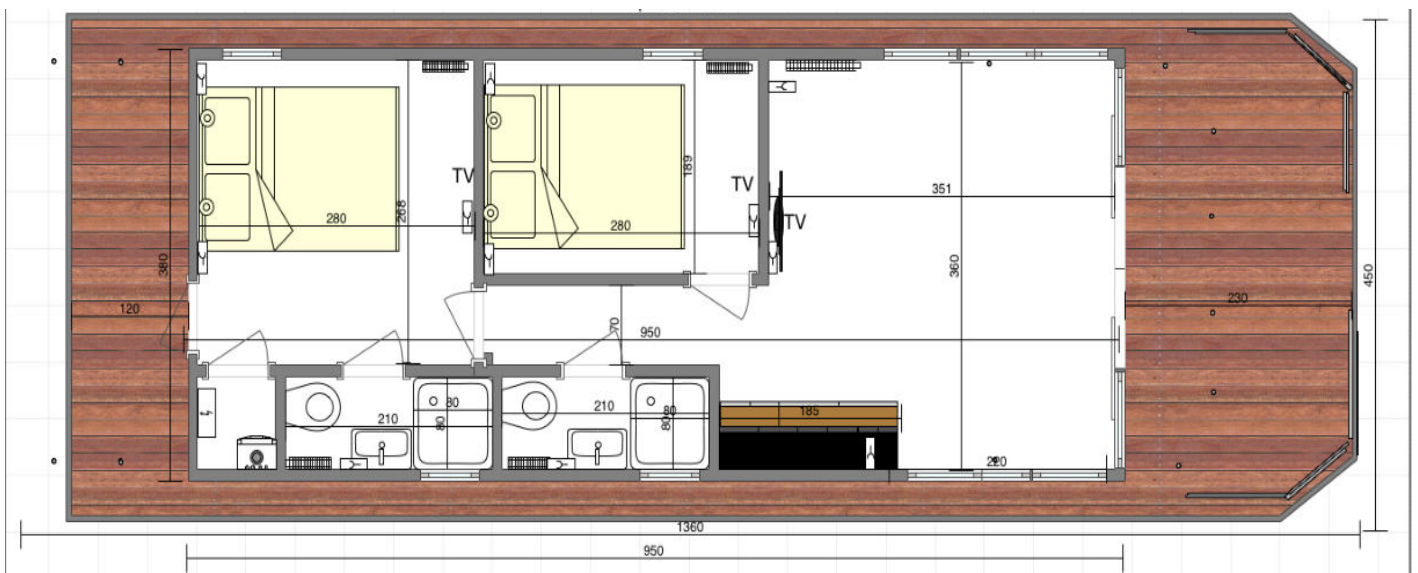


APART EL

APART EL 2.1



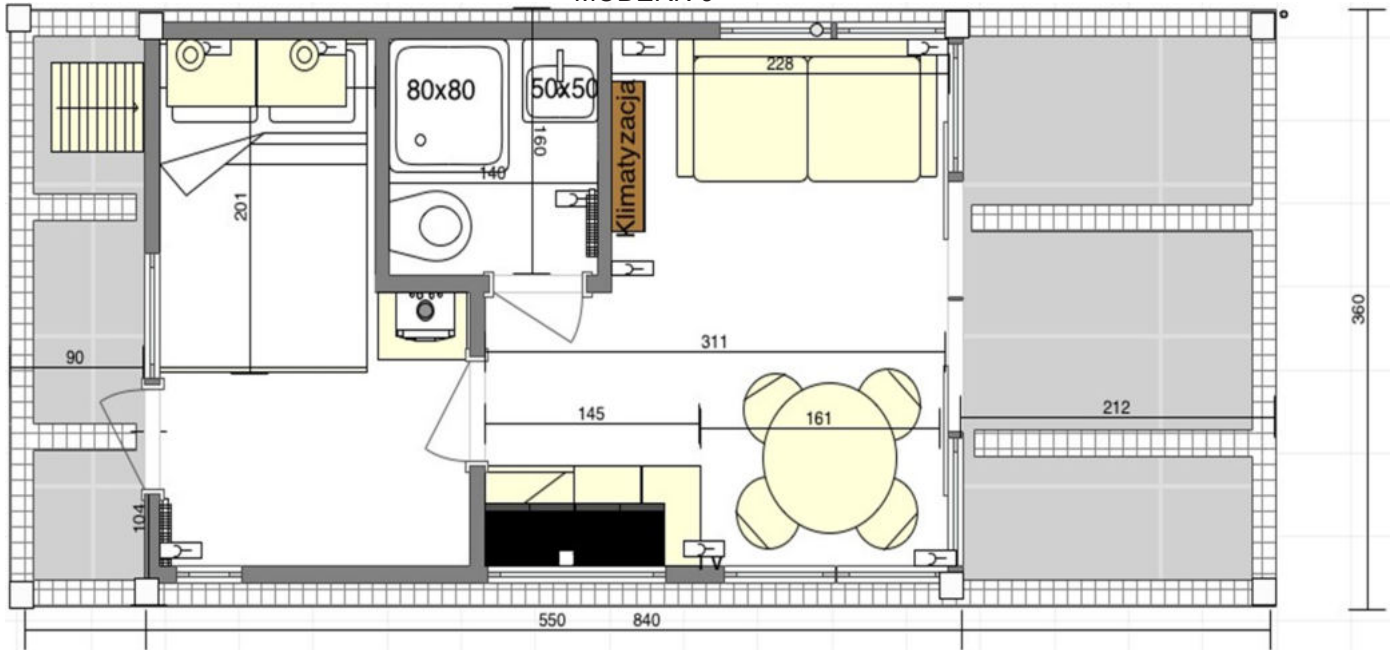
APART EL 2.2



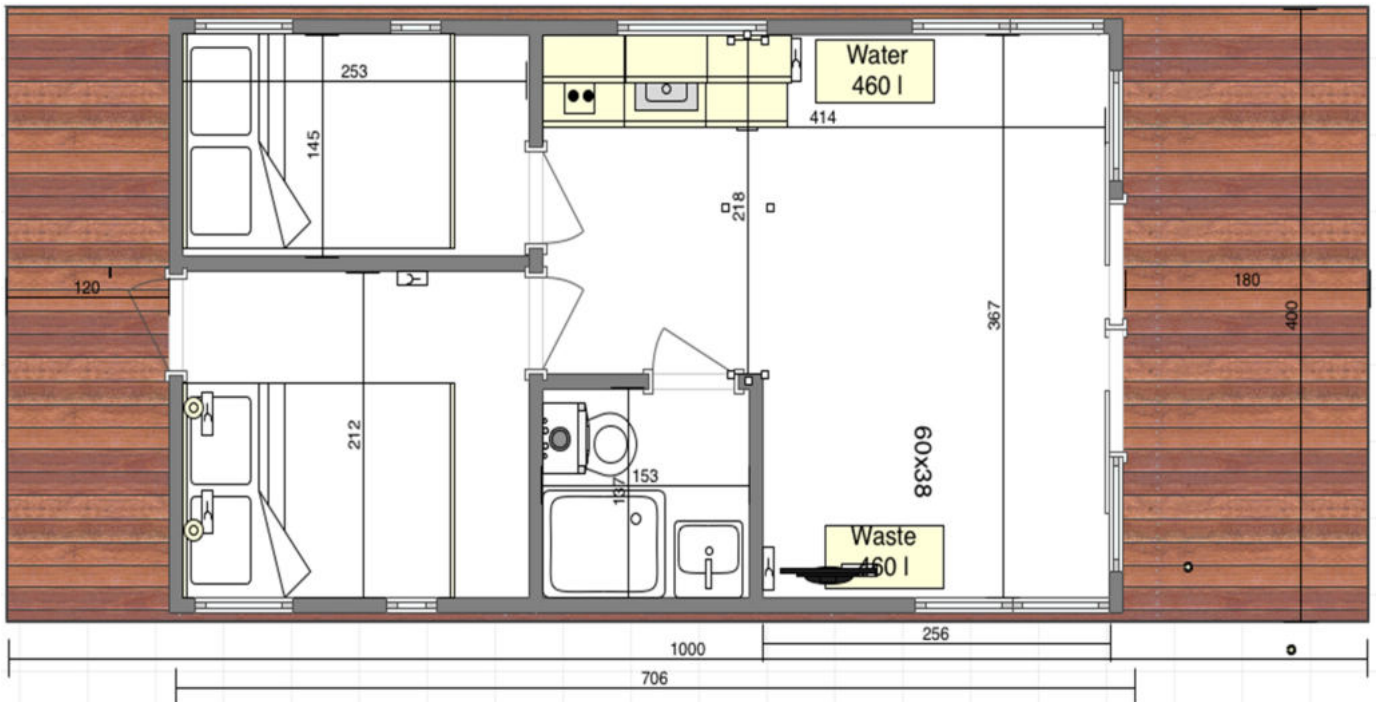


# MODERN 9 / 10

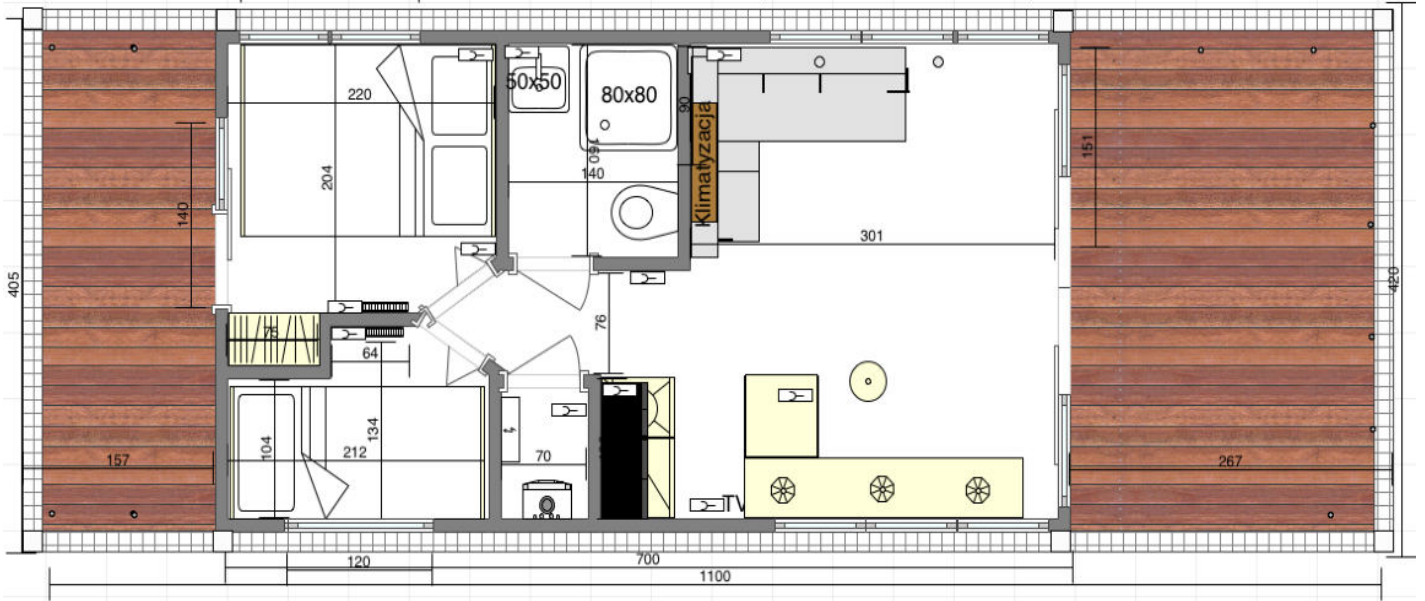
MODERN 9



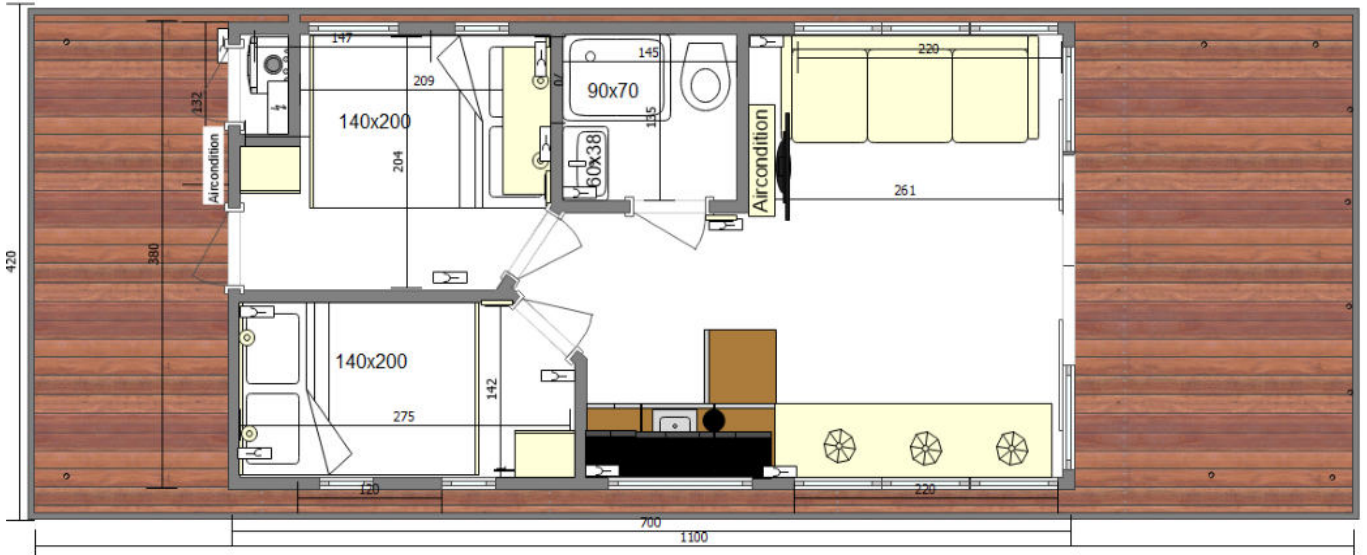
MODERN 10



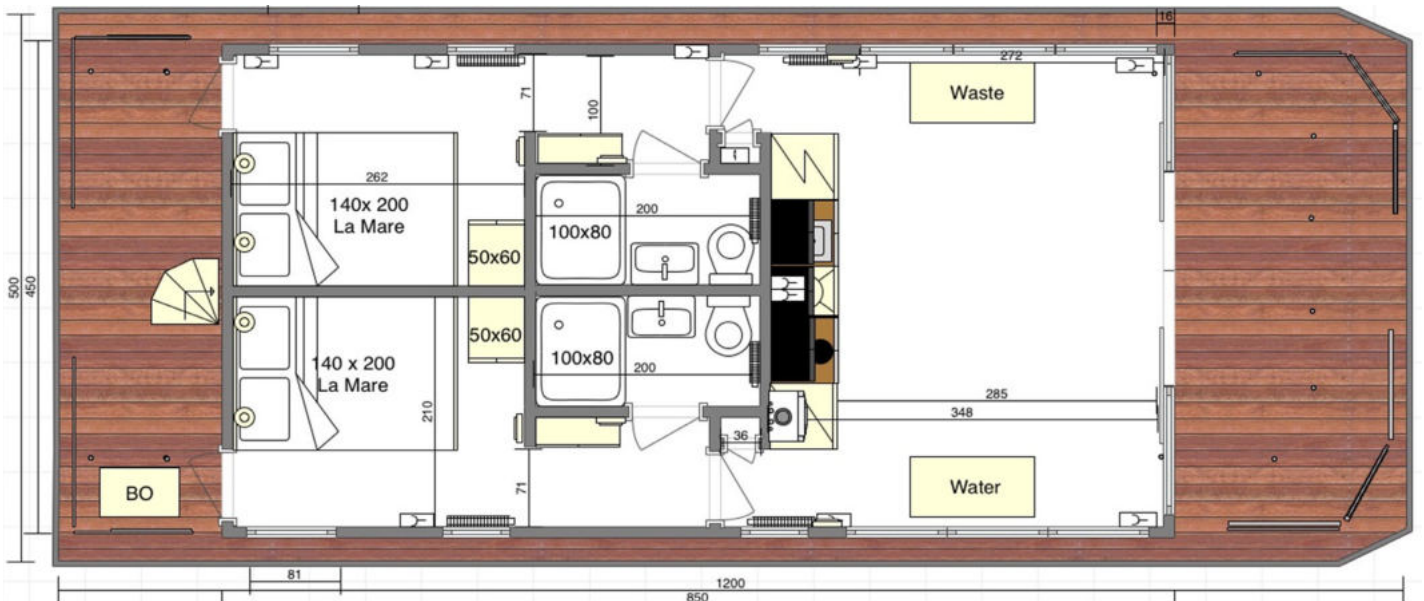
MODERN 11 / 2.1



MODERN 11 / 2.2

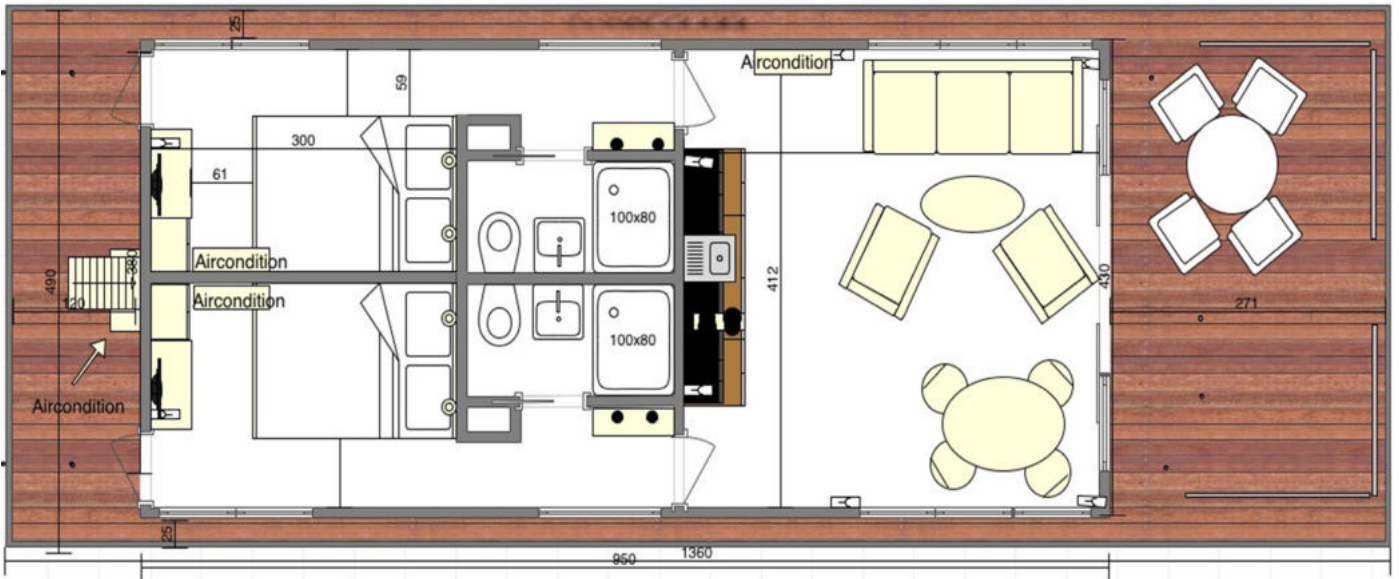


MODERN 12

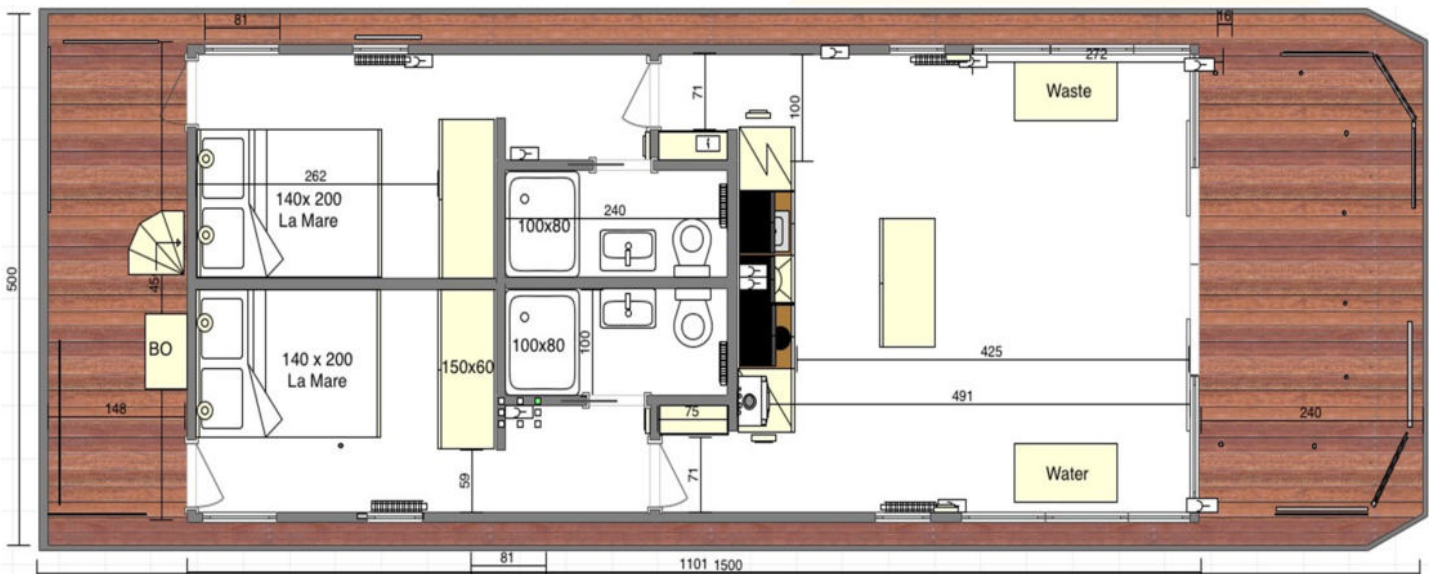


# MODERN 14 / 15, MARINAHOUSE

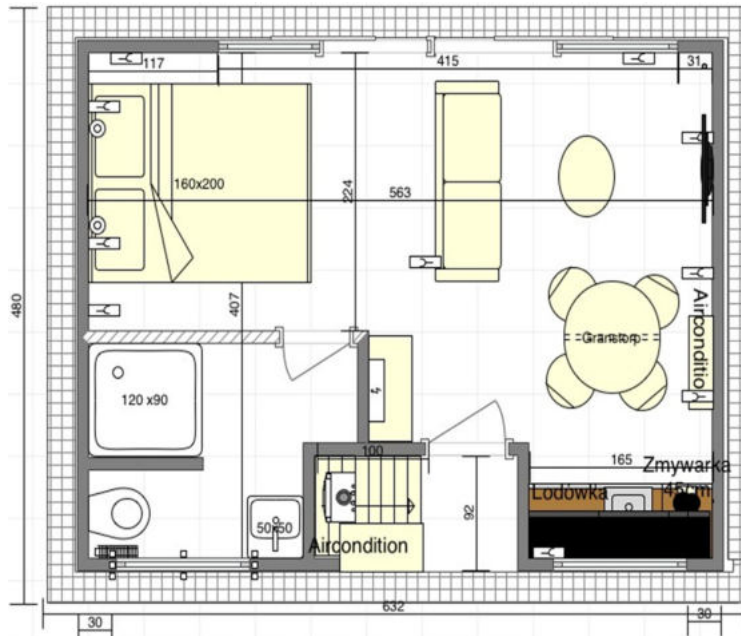
MODERN 14



MODERN 15



MARINAHOUSE



LaMare Sp. z o.o  
Bydgoszcz, Poland  
Portowa 10 str.  
85-757

LA  MARE

